

# MELBOURNE

24-25 MAY 2023

MELBOURNE SHOWGROUNDS

Epsom Road, Ascot Vale

**atsa**  
independent living  
**expo**

## EXPO GUIDE

### OPENING HOURS

Wednesday 24 May  
8:30am - 4:30pm

Thursday 25 May  
8:30am - 3:00pm

[events@atsa.org.au](mailto:events@atsa.org.au)

[www.atsaindependentlivingexpo.com.au](http://www.atsaindependentlivingexpo.com.au)

Organised by

Media Partners



# Vote now!

Visit [www.atsa.org.au/voting/best-new-product-2023/](http://www.atsa.org.au/voting/best-new-product-2023/) to vote.  
Voting closes 4pm AWST 31 May 2023.

You can also vote for the best stand at ATSA Independent Living Expo Melbourne, Small and Large, voting will open 8am 25 May and close 4pm 25 May 2023.

## Finalists for Best New Product Award are:

### C-Pen Reader 2

Scanning Pens Stand, Perth



The C-Pen ReaderPen is used extensively in schools and by healthcare professionals across Australia. The smart pen scans printed text and converts the text to speech, reading the words out to the user. The pens are useful in three main areas:

- For those with reading difficulties such as dyslexia, autism, ADHD, processing issues etc
- For those with a low reading or literacy level or
- For EAL students whose first language is not English

The pens encourage reluctant readers to read and can boost self-confidence and reduce stress & reading anxiety.

### Donatello Plus Lift Recliner (Alivio)

K Care Stand, Melbourne & Perth



The Donatello Plus Lift Recliner has been designed for home use and to improve the lives of people that may have mobility, postural support, pressure distribution, and general pain and discomfort issues.

The Donatello Plus is packed with features, including: Zero Gravity (tilt in space); Shiatsu Massage; Heated Seat; Lift and Tilt; Postural supports; Soft touch controller; Wireless Phone Charger; Drinks holder and Airline Style Head Support.

### KandoKutter Safe Knife

KiddiKutter Stand, Perth



Adult Safe Knife. Cut, chop and slice safely with KandoKutter. Finally! The world's first adult safe knife is available. Designed for adults and teens with special needs to make prepping food easier and more enjoyable. Features rounded serrations that effectively cut through food, not skin. The unique patented blade works using a sawing motion that maintains contact with the food's surface, taking away the risk of cuts. Made from a high-quality stainless-steel blade that's designed to last for years, with an attractive wood handle that's easy to hold, KandoKutter enhances independence and self-confidence.

### Kera Sit2sit Hoist

Aidacare Stand, Melbourne & Perth



The Kera sit2sit is a revolutionary new type of hoist that empowers a single caregiver to be able to transfer a person, who has no standing strength or ability to hold on, quickly and safely between seated positions. It is providing a safer alternative to a sit-to-stand hoist and can delay the progression to using a sling hoist.

These outcomes have had life-changing effects for clients, allowing them to stay in their own homes, save time and energy and reduce the risk of injury in their day-to-day transfers.

### Klaxon Twist Power Assist

APEX Mobility Stand, Melbourne & Perth



A game-changer, the Klaxon Twist, is an innovative power-assist device for manual wheelchairs.

Due to its unique, compact design, the Twist can be mounted out the front of the wheelchair, or underneath, to give drive from the rear.

Twist is the compact, multi-function propulsion system that you need: a small wheel with an electric motor and a battery. Lightweight and manoeuvrable, Twist is designed to accompany you on every journey.

### PDG Fuze Take-Apart Tilt-in-Space Wheelchair

Linds Rehabilitation, Melbourne & Perth



Take-Apart is an optional frame upgrade that allows the wheelchair to be taken apart for easy transportation or storage. Disassembly and reassembly take seconds and is completely tool-free. This feature reduces the weight of the heaviest piece of the wheelchair to 13kg or less. Independent power wheelchair users can consider adding power assist wheels to this manual option, providing a transportable, powered tilting option with a total weight under 100kgs. The Fuze Take-Apart is perfect for transporting in the boot of a car or SUV. This take-apart tilt system puts travelling in an airplane back on the travel itinerary.

### Quantum TB4

Pride Mobility Products Australia, Melbourne and Perth



The TRU-Balance® 4 Power Positioning Seating System has been designed to truly meet the needs of users.

In addition to a full complement of stand power positioning functions, including power tilt, power recline, iLevel and power AFP, the TRU-Balance® 4 Power Positioning system provides 0 -30 degrees of power anterior tilt. TRU-Balance® 4 provides users with optimal access to perform activities of daily living. In addition, the dual actuator Articulating Foot Platform (AFP) can be lowered to the ground to assist with transfers. Therefore, allowing users the ability to maintain their independence at home and in the community to retain autonomy in their lives without the additional need for support staff.

To further complement the new TB4 seating system, an easily programable memory seating function is included to provide optimum seating needs throughout the day.

### SIMO

Motum Stand, Perth



The SIMO is an innovative mobility simulator that has been designed to measure, validate and improve the sitting posture when scripting a manual wheelchair. It gives the user an opportunity to compare and contrast minor tweaks to positioning, facilitating a perfect fit and providing the potential to try before you buy on what would have previously been a completely custom chair.

By simulating a virtual city environment, users are able to test their wheelchair and its performance.

There is in-built potential to automatically adjust: Seat width; Seat depth; Seat height (front and rear); Tilt; Backrest height and angle; Footrest height (front and rear); Overall frame length; Centre of gravity

The SIMO then measures each hand propulsion assessing the effectiveness of each wheel spin - this enables identification of the optimal sitting position to achieve more speed, more power and ultimately, more freedom.

### Scout Mobility Warrior Powered Hockey Wheelchair

Wild West Wheelchairs Stand, Perth



The Scout Mobility Warrior is the first Powered Hockey Sports Wheelchair on the Australian market. The custom built Warrior Sport Wheelchair is designed for indoor sport use only. It is a high performance wheelchair and requires sufficient physical and cognitive capabilities from the user. The Warrior has a top speed of 15km/h, handcrafted safety features, and modular adaptable features for every ability.

The Warrior is able to be controlled by a joystick, head array, breath tube, and numerous other ways. Athletes with limited mobility are able to play without a hockey stick, instead using a "T-Bar" or "T-Stick" to control the ball with their chairs. Seat width and depth, and backrest width and height, are easily adjusted, as well as seat height, backrest angle, footplate height and angle, and guard depth. This makes a single Warrior chair able to be used by multiple athletes.

### VivaPlus Seat Walker

Unicare Health Stand, Perth



A stylish plus-size walker with an emphasis on style.

The Viva Seat Walker by Unicare offers a patented depth-adjustable backrest, push button height adjustable handles, a wide padded seat, and a shiny metallic finish. The Viva is available in Rose Gold for a touch of class and Meteor gray for a glaze of sophisticated luxury. It is the most feature-packed, refined rollator Unicare has ever produced. These unique features and more, have made the Viva a game-changer and trendsetter in the mobility aid market.

With an emphasis on style, the VivaPlus is set to lead a new generation of mobility aids for our plus-size population that balances clinical characteristics with modern lifestyle features.

### Wonderseat by Spex

Medifab Stand, Melbourne & Perth



Wonderseat is more than just a paediatric seating system. It's a window to a world of fresh and exciting opportunities; a symbol of fun, a promise of adventure and a vehicle for personal expression and empowerment. Putting the fun into function.

The Wonderseat family consists of a range of paediatric wheelchair seating systems created specifically to provide children with the ultimate support.

From packaging to product finishings, Wonderseat is as uplifting as it is supportive!

### Ziggy by Luddi

Luddi Stand, Melbourne & Perth



Invented by Luddi, the Ziggy boasts an array of unique features that make it the most accessible and inclusive sexual wellness device ever created.

Designed with vision impairments in mind, the Ziggy features high-contrast colors and braille, making it easy to use for those with limited vision. Its unique shape and design have been crafted with wheelchair users and individuals with low-functioning upper limb/hand use or single-hand use in mind, allowing for effortless use and maximum comfort.

With a long battery life of up to 3 months and magnetic features that facilitate easy wireless charging, the Ziggy product provides a versatile range of uses for both individuals who possess a penis and those who do not. Able-bodied individuals will also love the user-friendly features, making the Ziggy the perfect solution for anyone seeking uncomplicated sexual wellness.



**VOTE NOW!**

[www.atsa.org.au/voting/best-new-product-2023/](http://www.atsa.org.au/voting/best-new-product-2023/)



REHAB  
EQUIPMENT  
TAILORED FOR  
YOUR LIFE.

Visit us on  
stand 414

Victoria's  
leading  
supplier in AT  
equipment.



Powerchairs



Manual chairs



Indoor seating



Standing aids



Strollers



Walking aids



Specialised seating



Vehicle seating



Recreational



Beds & night  
time aids



Bathroom aids

# MELBOURNE 24-25 MAY 2023 Exhibitors



## 4HEALTHCARE

### Stand 160

4Healthcare have developed an industry range of adjustable shower commodes that fit all patients' body dimensions and comfort preferences. All 4Healthcare shower commodes come with adjustable seats, armrests, footplates, and seat configurations. Their self-propelled shower commode chair with wheels is ideal for patients who have retained more independence.

[www.4healthcare.com.au](http://www.4healthcare.com.au)



## AAA PLAY AUSTRALIA

### Stand 620

CONNECT | ACCESS | PLAY

AAA Play is a service connecting people with a disability to sports and recreational opportunities across Victoria. AAA Play facilitate and promote access to sport and recreation opportunities for people with a disability. AAA Play promote the inclusive sport and recreation sector in Victoria and does this by building and establish strong and effective working relationships with State Sporting Associations, Regional Sporting Assemblies, Councils, Disability Sport providers, schools, and service providers.

[www.aaaplay.org.au](http://www.aaaplay.org.au)

accessible  
beaches

## ACCESSIBLE BEACHES AUSTRALIA

### Table 24

Accessible Beaches Australia's is a Not For Profit whose purpose is to make

Australia's beaches accessible to everyone, regardless of ability, neurodiversity or age. Going to the beach is a quintessential part of the Australian way of life and everyone has the right to this experience.

They advocate for better beach access through talking with Councils, Government and Life Saving organisations and conduct training on the importance of inclusion and accessibility of our beaches.

Accessible Beaches Australia partner with these same organisations to make their beaches accessible and run a comprehensive directory, listing these beaches with accompanying photos and detailed information.

[www.accessiblebeaches.com](http://www.accessiblebeaches.com)



## ACORN STAIRLIFTS

### Stand 88

An Acorn Stairlift gives you a safe, comfortable, and simple way to get up and down your stairs. Each Acorn Stairlift is tailor-made to suit your individual home and lifestyle. They are designed for fast installation with a range of cleverly engineered features that make them quick and simple for us to install and more importantly for you to use.

Acorn Stairlifts are precision manufactured, designed, and assembled in the UK. They are fitted by qualified installation engineers, with all work conforming to the highest standards. These are just a few reasons why Acorn has hundreds of thousands of happy customers throughout the world.

[www.acornstairlifts.com.au](http://www.acornstairlifts.com.au)





### ACTIVE ADAPTIVE

#### Stand 304

At Active Adaptive their focus is on human centric engineered clothing. They are the inventors of the Seamless Back Trouser. Clothing with adaptability is their focus. Basic dressing tasks made easier with Zips or Velcro pockets and attachments.

Pushmitts -Active Adaptive's basic three: Izzy, David and the Jeff Mitt designed at the Austin and PA Hospitals. Their thirty other designs have been made from adaptations of these three. They also make Palmer Pockets, Chest, and Leg straps. New to the market is their swimming cape. Absorbent and warm for quick and easy transfers from pool to chair. Australian manufacturing since 2008.

[www.activeadaptive.com.au](http://www.activeadaptive.com.au)



### ACTIVE REHAB EQUIPMENT

#### Stand 414

Active Rehab is a family run and owned business with a passionate team of individuals, who are committed to enhancing the lives of those with disabilities. They do this by providing AT equipment for children and adults through Victoria and beyond. Therapists and families come to Active Rehab when seeking professional problem solvers, who will achieve customised solutions of the highest quality. The team genuinely care for their clients and are inspired by the impact they can have in enabling them to live life.

[www.activerehab.net.au](http://www.activerehab.net.au)



### AFIKIM ELECTRIC VEHICLES AUSTRALASIA

#### Stand 276

Vision - To improve the quality of life for people, by providing high quality, high performance electric mobility solutions that enhance functional capabilities and independence, while safeguarding the environment

Mission - To make electric mobility scooters that focus on meeting driver's needs and thus to continue being the brand of choice for everyone who values performance, safety, reliability and service.

[www.afiscooters.com](http://www.afiscooters.com)



### AIDACARE

#### Stand 176

Aidacare is one of Australia's largest Healthcare Equipment and Service providers.

Since 1987, they have assisted Australians in the Hospital; Residential Aged-Care; Home & Community Care; Complex and Rehabilitation sectors. Their focus on product quality and ongoing services & support has made Aidacare & Aspire trusted brands throughout Australia.

Aidacare's vision is to be Australia's leading Healthcare Distributor in their chosen areas of focus providing unparalleled customer service and product excellence as a path to optimal healthcare equipment solutions for their customers.

[www.aidacare.com.au](http://www.aidacare.com.au)



### ALLEGRO CONCEPTS

#### Stand 264

Allegro Concepts is Australia's premium manufacturer of patient lifting, handling, and transfer products. They pride themselves in offering sturdy, functional and ergonomic products for the hospital, aged care, and home care environment. Their mission is to provide Innovation in Patient Handling. Allegro Concepts Patient Handling equipment will: Increase the safety and comfort with which a client is transferred, reduce strain on the carer and promote quality of life.

[www.allegroconcepts.com.au](http://www.allegroconcepts.com.au)



### ALLIANZ PARTNERS

#### Stand 576

At Allianz Partners your clients are in safe hands, with over 22 years of experience in caring for vulnerable people they are supported by a network of providers across Australia including over 500 trade providers and health equipment suppliers. Allianz Partners is a proud provider to the Department of Veterans' Affairs. Allianz Partners helps in the aged care sector with Home Maintenance, Domestic Assistance, Gardening, Allied Health, and Aids and Equipment to promote greater independence, safety and quality of life.

[www.mobilityservices.com.au](http://www.mobilityservices.com.au)



### ALLIED OT

#### Table 8

Allied OT provides a suite of allied health services, including, Occupational Therapy, Speech Pathology, Behaviour Support,

Psychology, Exercise Physiology, and Physiotherapy. They support people of all ages. Their skilled therapists deliver tailored, innovative interventions that influence lives, create possibilities, and make a positive difference.

[www.allied-ot.com.au](http://www.allied-ot.com.au)



### AMPLIFY ACCESSIBLE TRAVEL SPECIALISTS

#### Table 22

Amp up your travel/respite experience with the qualified Travel Agents who provide the support you need to ensure you relax and enjoy a stress-free booking process that leads to the escape you desire. Leave it to Amplify - Accessible Travel Specialists to take care of the heavy lifting and do what they do best; organise a seamless end-to-end travel experience. From flights, accommodation, transfers, and activities, to arranging care support, equipment hire, and consumables, they're all about minimising stress and maximising fun factor! All you need to do is pack your basics, set your email to 'out of office'... and go!

[www.amplifyats.com.au](http://www.amplifyats.com.au)



### APEX MOBILITY

#### Stand 12

APEX Mobility is an Australian owned company and wholesale supplier of a wide range of Assistive Technology equipment for people with a disability. APEX Mobility have a network of dealers throughout Australia who have an in-depth knowledge of the assistive technology industry and products.

[www.apexmobility.com.au](http://www.apexmobility.com.au)



Australia's foremost  
assistive technology event

**BY THE INDUSTRY  
FOR THE INDUSTRY**

**CANBERRA**

**7-8 NOV 2023**

EXHIBITION PARK (EPIC)

**ADELAIDE**

**6-7 MARCH 2024**

ADELAIDE SHOWGROUND

**SYDNEY**

**22-23 MAY 2024**

SYDNEY SHOWGROUND

**BRISBANE**

**29-30 MAY 2024**

BRISBANE CONVENTION &  
EXHIBITION CENTRE

**REGISTER  
NOW**

**atsa**  
independent living  
**expo**

1300 789 845

[www.atsaindependentlivingexpo.com.au](http://www.atsaindependentlivingexpo.com.au)

Organised by

Media Partners



**atsa**  
independent living  
**expo**



**ASSISTIVE TECHNOLOGY  
SUPPLIERS AUSTRALIA**

**Stand 502**

ATSA gives members a business edge through access to the services, tools, and connections only a peak body can deliver. ATSA is the industry's voice to government, allied health, and other stakeholders. ATSA promote the vital role of assistive technology. Their works puts the spotlight onto an essential industry and advocates for the highest standards of professionalism in the AT industry. ATSA represent members in all facets of assistive technology, including suppliers, manufacturers, service providers and individuals. They can support you with context, guidance, and industry contacts, making business easier in a challenging environment.

[www.atsa.org.au](http://www.atsa.org.au)



**ASTRIS PME**

**Stand 148**

Astris PME is an independent, industry leader providing Assistive Technology Equipment and services to clients throughout Australia. They are dedicated to improving lives of people with disability by providing the best the world has to offer in AT equipment as well as advice and one-on-one consultations with the Astris PME team of specialist consultants.

Their services include equipment trials, assessments, and personalised consultations as well as extensive product knowledge and customisation of products to suit individual needs and requirements. They also offer hire of AT equipment, mobile service technicians and scheduled maintenance programs.

[www.astris-pme.com.au](http://www.astris-pme.com.au)



**ATTO AUSTRALIA**

**Stand 586**

Atto Australia are the sole importers and distributors of the superbly engineered Atto mobility scooter by Moving life. The models are all portable, foldable, compactable, splittable, with more leg room than other portable scooters. This aesthetically pleasing scooter is a real head turner! Features include remote control locking fob, LED lights, extra hand brake, 10km per hour speed. No other portable scooter accessories available such as crutch/ cane holder, swivel seat, orthopaedic back rest, phone holder, underset grocery bag, quality flight kit, dog carrier and much more!

[www.attoaustralia.com.au](http://www.attoaustralia.com.au)



**AUCURO**

**AUCURO**

**Stand 42**

Aucuro's aim is to develop premium healthcare products that address the unresolved needs of people with disabilities, making it easier for people to remain independent. A Revolution in Sit-Down Showering! - Aucuro's Dynamic Shower Holder is a patent pending showering system specifically designed to assist people who shower sitting down. It also lightens the daily workload of carers and healthcare professionals by reducing the risk of back strain from showering multiple people.

The Aucuro Walking Stick combines traditional craftsmanship with the latest manufacturing technology. It has an uncompromised aesthetic by using a hidden pin lock system for 8 levels of height adjustment and features a finely crafted walnut handle with an advanced aircraft grade aluminium shaft.

[www.aucuro.com](http://www.aucuro.com)



### AUSTRALIAN RAMP AND ACCESS SOLUTIONS

#### V1

Australian Ramp and Access Solutions, partnering with Placeable Solutions, are leaders in the design, manufacture and installation of accredited Disability Accessible Facilities and prefab systems. Their companies are proud to be creating facilities for those with varying abilities, making lives, events, recreation, and the great outdoors more accessible for all Australians.

They pride themselves in innovation that solves access issues in a time and cost-effective manner, using only the highest quality product and systems, while offering end-to-end services. Their comprehensive product range is designed and manufactured in Australia.

From Domestic shower inserts and handrails to commercial heavy-duty ramps suited to Schools, Universities, mine sites, waterways, and shopping centres, right through to Changing Places Facilities - We are Able!

[www.arasolutions.com.au](http://www.arasolutions.com.au)



### AUSTRALIAN REHABILITATION & ASSISTIVE TECHNOLOGY ASSOCIATION - ARATA

#### Table 14

The Australian Rehabilitation & Assistive Technology Association (ARATA) is the national peak body representing rehabilitation & assistive technology stakeholders. ARATA's mission is to & sustain an inclusive assistive technology

(AT) community of practice. ARATA offers a range of benefits, including an active member listserv where people can pose questions or conversations about AT, with advice regarding AT use, supply, development, research &/or education. ARATA runs various webinars on AT topics, which can be accessed live or after the event via their online shop. ARATA has a range of AT publications & government/industry submissions available via their website.

[www.arata.org.au](http://www.arata.org.au)



### AUTOMOBILITY

#### Stand 178

Automobility is one of Australia's leading wheelchair access vehicle manufacturers.

Commencing operations in 2001, they are driven by their Core Values of Excellence, Customer Oriented and Integrity and are renowned for their innovative and high-quality designs and conversions.

Automobility wheelchair access vehicles meet Australian Standards. They offer different configurations - driver and drive from wheelchair or front row wheelchair, 2nd row wheelchair, 3rd row wheelchair and seating for up to 6 people.

With their robust construction and simple maintenance free proven designs, their vehicles are ideal for private or commercial users. They are one of the major suppliers to the Transport Accident Commission, Workcover, Insurance companies, Court funded purchases, community transport and private buyers Australia wide.

Automobility pride themselves in their customer service and support that includes a 24-hour emergency contact phone and an Australia wide service and support network.

[www.automobility.com.au](http://www.automobility.com.au)



### AVAIL DESIGNS

#### Stand 38

Avail Designs will be displaying their wide range of stylish grab rails, shower seats, chairs, and bathroom accessories.

They help create stylish and practical accessible bathrooms with our wide range of popular sizes and colours or custom designs to suit individual needs.

Avail is launching their new product at this year's expo with their innovative new fold up toilet support and shower chair designed in house. They are also showing off new finishes for grab rails and shower seats along with their colour matching range of bathroom tapware and bathroom accessories.

[www.avail.design](http://www.avail.design)



### AVANT INNOVATIONS

#### Stand 216

Avant Innovations is Australia's leading importer and distributor of assistive technology that aims to provide the user with holistic support as opposed to just basic day-to-day tasks. Visit them to see how to access the pool and the beach or how to achieve a good night's sleep through positioning and sensory integration.

They can help with solutions in essential areas such as lifting & transfer, hygiene, and upper limb augmentation to improve eating, drinking and other hand-related tasks.

Talk to Avant Innovations about mobility in both early intervention and rehabilitation phases.

[www.avantinovations.com.au](http://www.avantinovations.com.au)



### AVANTE AUSTRALIA

#### Stand 278

Offering an extensive array of Electric Beds and matching Mattresses for all your mobility needs. Avante has been one of Australia's leading suppliers of Electric Beds and Mattresses for the past 14 years, continually offering the latest technology with Okin motors and are innovators in the mobility market.

[www.avanteaustralia.com.au](http://www.avanteaustralia.com.au)



### BLIND SPORTS & RECREATION VICTORIA

#### Table 41

Blind Sports and Recreation Victoria offers over 20 fun, social sport, and recreation programs for those who are blind or have low vision - all ages and fitness levels. They support you to get active and take part in the sport or recreation activity of your choice with other adults, teens or kids who are blind or vision impaired. Improve your health and well-being, while having fun. Explore the opportunities - drop by and say hi - and have a go at blind golf!

[www.blindsports.org.au](http://www.blindsports.org.au)



### BLUE BADGE INSURANCE

#### Stand 556

Blue Badge Insurance has pioneered specialist disability insurance in Australia since 2014, with a focus on protecting the mobility and independence of people with disability and restricted movement. Blue Badge Insurance offers tailored insurance cover for Motor Vehicles, Mobility Equipment and Pet Insurance.

[www.bluebadgeinsurance.com.au](http://www.bluebadgeinsurance.com.au)



### BRAZIER MOBILITY

#### Stand 254

Brazier Mobility (formerly Les Brazier Special Vehicles) is Australia's premier modifier of Vehicles for Wheelchair Accessibility and modified driving controls. Their modified Vehicles are certified to the relevant Australian Standard and Australian Design Rules irrespective of which state.

With over 45 years' experience they are experts in the transportation needs of the mobility challenged and elderly ranging from one off individualised modification to multiple vehicle modifications.

Located at Edinburgh North in South Australia, their Wheelchair accessible vehicles along with other modifications and mobility products are distributed to their Australia wide customer base.

[www.braziermobility.com.au](http://www.braziermobility.com.au)



### BRIGHTSKY AUSTRALIA

#### Stand 58

BrightSky Australia is the social enterprise of Forward Ability Support and home delivers a wide range of specialist healthcare products including Continence, Wound Care, Skin Care, Nutritional Supplements & Specialised Foods, Respiratory Products and Personal Protection Equipment (PPE) direct to your door. BrightSky are about supporting you on your unique path through wellness, to help you maintain and improve your health and support you to live your best life.

They aspire to play a vital role in elevating the lives of customers; the people they support, live and work with; and the wider community through the extensive range of products they deliver and the crucial services the charitable organisation they're part of, provides. BrightSky provides access to clinical expertise and advice that can support people to maintain their health and independence.

[www.brightsky.com.au](http://www.brightsky.com.au)



### CANTERBURY CONCEPTS

#### Stand 218

Canterbury Concepts grabrails have built a reputation for trust and reliability. Their rails have been designed and tested to maximise grip and optimise safety. They are produced with a contemporary look and modern colours. Available in beige and white they look great in the home or anywhere they're needed.

Canterbury Concepts grabrails continue

to be the preferred grabrail safety solution all throughout Australia and New Zealand, and they are proud to provide a product that assists people to continue with their daily activities and remain secure.

Canterbury Concepts grabrails:  
Stay mobile. Stay independent.  
Stay at home.

[www.canterburyconcepts.com.au](http://www.canterburyconcepts.com.au)



### CARE QUIP

#### Stand 86

Care Quip is an Australian owned family business that believes in transforming people's lives for the better. Their goal is to support and empower the lives of those who are less able through innovative products and customer focused solutions. Since 1981 they have researched and sourced the latest products from Australia and around the world because they believe in providing the right solution delivering genuine peace-of mind. They pride themselves on having the best range and availability of products to ensure their customers can rely on them to support them in providing the very best of care. "We are equipped to care".

[www.carequip.com.au](http://www.carequip.com.au)



### CAREMED ALRICK

#### Stand 364

Caredem Alrick create elegant and functional healthcare furniture that enhances the lives of residents in high-dependency care environments. They specialise in customising beds to meet specific patients' needs and they love a challenge!

This year at ATSA, they are excited to introduce a brand-new product to the

market. it's designed for young kids and older adults with complex needs who require a high level of protection. Come and see it for yourself, try it out, and learn all about its features. They'll also showcase their best-selling Montar Change Table, with the Wet Room upgrade. Caredem products are proudly Australian Made and Owned.

[www.caredem.healthcare](http://www.caredem.healthcare)



### CARETEQ

#### Table 12

CARETEQ is an ASX-listed, health-technology company delivering a portfolio of innovative solutions in the health and aged care sectors. Founded in 2016 with the mission of improving wellbeing for all - both carers and patients - through technology, the SOFIHUB portal was born. CARETEQ's solutions have since expanded to include assistive living products such as safety pendants, falls detection devices and routine and activity sensors. CARETEQ also provides medication management services with the acquisition of Ward Medication Management in 2021.

[www.sofihub.com](http://www.sofihub.com)



### COBALT HEALTH

#### Stand 174

Cobalt Health is an innovator in Assistive Technology equipment. They design and manufacture their own equipment, specialising in pressure care seating and mattresses, orthopedic seating, and electrically adjustable beds. They are currently designing the next generation of care and disability equipment.

[www.cobalthealth.com.au](http://www.cobalthealth.com.au)





### COGY PEDAL WHEELCHAIRS

**Stand 428**

COGY pedal wheelchair is the world's first wheelchair that moves by pedalling. This helps in improving leg function, strength, and fitness. For many wheelchair users, opportunities for being active can be limited. COGY allows for lifestyle change by combining mobility with activity, allowing for regular use as well as sports and recreational use. COGY can be used from age 4 years onwards and is suitable for anyone from children who have Cerebral Palsy to adults who have suffered a stroke, motor neuron disease or spinal cord injuries. Fun, safe and light, COGY is suitable for indoor and outdoor spaces... the possibilities are endless.

[www.cogy.com.au](http://www.cogy.com.au)



### CONNI

**Stand 680**

From young children to the elderly, Conni incontinence products offer superior technology and discreet comfort. Their range is fully washable, making them environmentally sustainable, cost-effective and easy to use. Conni products have been Australia's most trusted brand for over 21 years, it's their quality that makes the difference.

[www.conni.com.au](http://www.conni.com.au)



### COUNTRY CARE GROUP

**Stand 108**

Country Care Group is an Australian-owned and operated national retail and distribution group, ensuring assistive technology products and services are accessible nationwide. Founded by Rob Hogan and the Hogan family in 1997, Country Care started as one store in regional Victoria, growing into the national group of specialised retail stores, manufacturing, and distribution company, it is today.

Supplying hospitals, aged care facilities, in-home care, and communities, Country Care offer delivery, hire and service options, and a specialised retail team to meet the unique needs of each customer.

National Distribution. Local Service. Country Care Group provides innovative healthcare solutions, empowering people in their everyday lives.

[www.countrycaregroup.com.au](http://www.countrycaregroup.com.au)



### CRESCENT HEALTHCARE

**Stand 346**

Crescent Healthcare has been established for 40 years as an Australian owned and operated family business.

The unique tradition, offering you innovative, proven, premium, healthcare equipment solutions, along with their culture of care, coupled with a team motivated with many years' experience within the healthcare and aged-care industries, enables them to offer you an unparalleled service, ensuring you experience...just that extra mile... extra service... and extra care

Crescent Healthcare's comprehensive range of innovative products almost guarantees that you will find solutions to every problem that faces the Healthcare Professional and the user alike, because Crescent Healthcare believes everyone should have the right to a good quality of life, no matter what his or her physical condition may be.

[www.crescenthealthcare.com.au](http://www.crescenthealthcare.com.au)



### CUDDLE BUDDY PILLOWS

**Stand 54**

Cuddle Buddy has been producing Australia's most comfortable pillows since 2003. Their pillow's soft, squishy, mouldable, and cooling features are perfect for recovery, mobility, therapy or just a good night's sleep.

[www.cuddlebuddy.com.au](http://www.cuddlebuddy.com.au)



### DEJAY MEDICAL

**Stand 200**

Dejay is a family-owned Australian business, founded over 35 years ago. Their mission is to help people with a disability achieve their goals with our carefully selected rehabilitation and mobility equipment. They are a manufacturer of wheelchairs, designed and handcrafted to suit each individual at their workshop facility in Rouse Hill, in Sydney's North Western Suburbs.

[www.dejay.com.au](http://www.dejay.com.au)



### DEUTSCHER HEALTHCARE

**Stand 82**

Deutscher Healthcare are a Ballarat based, family-owned company, that has been in operation since 1904. They design and manufacture a range of healthcare beds and accessories that are made to the highest standard and built to comply to all related standards. They take pride in the products they produce and back up their Australian made beds and accessories with the best possible service they can provide. They welcome your call to discuss your requirements.

[www.deutscherhealthcare.com.au](http://www.deutscherhealthcare.com.au)



### DEWERTOKIN

**Stand 606**

DewertOkin is a market-leading manufacturer that specialises in developing and producing electric drive systems for medical equipment and adjustable furniture. With over 1,100 employees and locations in multiple countries, the company offers a wide range of innovative and high-quality products, including electric drives, control units, and accessories for medical and furniture manufacturers. DewertOkin's commitment to sustainability and environmental protection, along with their customized solutions for individual customer requirements, has helped them maintain their position as a market leader in the medical and furniture industry.

[www.phoenix-mecano.com.au](http://www.phoenix-mecano.com.au)





### DISABILITY SAFE SEATING SOLUTIONS

#### Stand 536

Disability Safe Seating Solutions Providing safe seating solutions for individuals with disabilities, medical conditions, or special needs. Suppliers of behavioural, postural harnesses, child car restraints and accessories to improve safer travel in vehicle.



[www.disabilitysafeseatingsolutions.com.au](http://www.disabilitysafeseatingsolutions.com.au)



### DOABILITY

#### Stand 340

DoAbility provide healthcare equipment for aged care and paediatric needs, online and direct to the public. Their years of experience mean you will get the right equipment and the right advice to make sure you get the most out of it.

They are Australian owned and operated, with clients ranging from healthcare professionals to the public.

[www.doability.com.au](http://www.doability.com.au)



### DPS PUBLISHING

#### Stand 272

DPS Publishing are behind the popular and informative Aged Care Guide, Disability Support Guide and Your Retirement Living Guide. These information-rich guides contain everything you need to know to navigate the Aged Care,

Disability or Retirement sectors. From information articles to real life stories, to a comprehensive directory of providers, the guides contain everything you need to know to find support and care.

[www.dpspublishing.com.au](http://www.dpspublishing.com.au)



### EAZILEE

#### Table 33

Eazilee's shared knowledge platform assists people to find the right technology to make everyday tasks easier by harnessing the power of the Assistive Technology Community. Through the shared experiences of A.T users, Health Professionals and A.T Makers, we help you to find the right technology, pay your experience forward to support others and influence design for the future.

[www.eazilee.com](http://www.eazilee.com)



Everybody ebikes

### EVERYBODY EBIKES

#### Stand 320

EveryBody eBikes supplies adaptive electric bikes and trikes to people living with disabilities. They supply options for all ages, from small children to seniors including taller and heavier riders. Supplying adaptive trikes, they offer a wide range of custom solutions to meet the rider's individual requirements including adjustments to seating, pedals, handlebars, brakes and can design, fabricate and modify special supports.

Their aim is to identify ebikes for everyBody, regardless of age, build, ability or confidence in riding. They are definitely

NOT your average bikeshop and pride themselves in taking the time to listen and with good old-fashioned service.

[www.everybodyebikes.com.au](http://www.everybodyebikes.com.au)



### FINCH HEALTHCARE

#### Stand 604

Finch Healthcare brings a premium selection of assistive technology products to Australian retailers with a view to improving clinical outcomes for Australians living with a disability. Having this commitment, they partner with retailers known for their excellence in customer service and product application.

[www.finchhealthcare.au](http://www.finchhealthcare.au)



### FISHER LANE MOBILITY

#### Stand 228

Fisher Lane Mobility have been operating in the Assistive Technology industry for over 40 years, so they know what it takes to achieve the right result for people looking to improve their quality of life through assisted means.

They are dedicated to offering the most comprehensive and responsive service in the Assistive Technology industry by offering a wide range of mobility equipment, after sales servicing, and home modification solutions. They understand that the right solution is a collaboration, and they love working with end users of equipment, their support networks, and their clinicians and therapists to achieve the best outcome.

Come by the stand and meet their friendly team so you can see in person their dedication to finding the right solution for whatever mobility or independence goal you might have.

[www.fisherlane.com.au](http://www.fisherlane.com.au)



### FOR-DE GROUP PTY

#### Stand 136

RedgumBRAND & SHOPRIDER Mobility is the leading independent wholesale supplier of innovative daily living and lifestyle products as well as mobility scooters and power chairs, in the Australian market. FOR-DE GROUP, their parent company has been a family owned and independent wholesaler for more than 28 years. RedgumBRAND & SHOPRIDER Mobility has a market leading reputation for Value, Reliability and Quality of their complete product range. Their outstanding availability of spare parts and support gives piece of mind to their vast dealer network.

[www.for-de.com.au](http://www.for-de.com.au)





### FORTE HEALTHCARE

#### Stand 360

Forté Healthcare are specialist manufacturers of High-Quality Pressure Care, Homecare and Medical Mattresses. Providing an extensive range of Mattresses for to Low-High needs clients, the Forté name is synonymous with Quality, Care, Comfort, Adaptability, and Innovation.

Solutions include Mattresses for Long-term care, Comfort, Spinal and Acquired Injury, Bariatric Care, Paediatric and Child Needs, Degenerative, Neurological and Challenging behaviour needs. With extensive, types and shapes of beds and room environments, ensuring optimal outcomes from every mattress prescription.

Trusted by Therapists and Dealers Australia Wide, Forté provide manufacturer direct support and expertise for prescription of medical mattresses, including assistance with customisations.

[www.fortehealthcare.com.au](http://www.fortehealthcare.com.au)



### FREEDOM MOTORS AUSTRALIA

#### Stand 342

Based in Sydney NSW Australia, Freedom Motors Australia Pty. Ltd was founded in 1997. Since that year they have grown to become the premier vehicle modifier for wheelchair access Australia wide. They pride themselves on bringing the most innovative and reliable wheelchair transportation solutions to the market. They have experience in the design, manufacture and installation of lowered

floors, ramps and hoists to many private and commercial vehicles. Freedom Motors are a quality driven company, so you can rest assured that you are dealing with a company who is committed to manufacturing the best quality wheelchair accessible vehicles, with the best trade persons, to the highest standards for the Australian market.



[www.freedommotorsaustralia.com.au](http://www.freedommotorsaustralia.com.au)



### GRIPPERZ NON-SLIP SOCKS

#### Table 6

Gripperz Non-Slip Socks are a unique footwear solution providing superior grip and safety for those at risk of falls. Their range of styles includes socks suitable to wear over anti-embolism or compression stockings and elastic-free tops suitable for people with diabetes or oedema.

Gripperz Socks are used by many hospitals and aged care facilities around Australia as part of their multi factorial falls prevention strategy. Shop online. Wholesale and bulk order enquiries welcome.

[www.nonslipgripsocks.com](http://www.nonslipgripsocks.com)



### GTK

#### Stand 382

GTK is a leading provider of Assistive Technology Equipment. Established in 1991, GTK's core focus has never changed – tailoring and configuring equipment solutions to the needs of it's clients. This is possible by offering in-house trials and assessments, mobile technical service and repairs and education and training to Therapists.

[www.gtk.com.au](http://www.gtk.com.au)



**Freedom2Live is a website and weekly e-newsletter and is FREE to subscribe\***

**A news and information resource for allied health professionals promoting new services and technologies**

Freedom2live.com.au and Freedom2live e-news provide information for:

- Mobility
- Assistive Technology
- NDIS
- Government Services
- Household Aids
- Vehicles
- Pressure Care
- Health, Wellbeing & Recreation
- Communication Aids
- Paediatrics / Childcare
- Home Solutions
- Accessible Travel
- Specialist Disability Accommodation
- Education & Training

**Product and service providers can connect directly with health professionals and the disability community.**

\*With over 8,000 subscribers

**To subscribe go to [Freedom2live.com.au](http://Freedom2live.com.au)**



### GUARDIAN SAFETY PENDANTS

#### Stand 290

Guardian Safety Pendants offers Australia's largest range of Mobile Personal. Fully customised for monitoring by family & friends or 24/7 professional monitoring. Their products have been shortlisted twice in the past 4 years for ATSA's Best Product of the Year.

Unmatched Customer Care includes lifetime support and unlimited programming changes. They are a Registered NDIS Provider nationwide offering extraordinary service to their clients and allied health professionals. Occupational therapists and medical professionals entrust their clients to them because they treat everyone as they would their own family.

Having a Guardian means having peace of mind.

[www.guardiansp.com.au](http://www.guardiansp.com.au)



### HÄFELE AUSTRALIA

#### Stand 554

Independence, Freedom and confidence. People with disabilities deserve a better life with more self-esteem, quality and the freedom to safely look after themselves.

Häfele are the world's leading specialist and producers of assistive devices and for accessibility as well as equipment for ergo and physiotherapy rehabilitation. Häfele products are recognised and appreciated around the world for their high quality, flexibility and accessibility as well as suitability under the SDA standard.

Today thanks to their experience and key partnerships, they are bringing this unique know how about accessibility and work environments to Australia.

[www.hafele.com.au](http://www.hafele.com.au)



### HANDI-REHAB

#### Stand 220

Handi-Rehab helps people with reduced mobility to transfer safely and easily from the wheelchair to bed, bath, shower. Handi-Rehab is an Australian company that specialises in the premium independent lifting solution Handi-Move.

[www.handirehab.com.au](http://www.handirehab.com.au)



### HEALTHCARE INNOVATIONS AUSTRALIA

#### Stand 90

Healthcare Innovations Australia Pty Ltd (HIA) specialises in the manufacture and supply of quality products relevant to end users from paediatric through to adults. Their focus is on postural management, protecting tissue integrity and finding the ideal solution for optimum lifestyle balance, after carefully analysing and considering internal and external influences.

[www.hiaus.net.au](http://www.hiaus.net.au)



### HEMCO HEALTH EQUIPMENT

#### Stand 518

Hemco Health Equipment is an Australian company that manufactures and design assistive aged care products, agitated client devices and hospital aides also including Sensory and Tactile products. Made for Dementia, Alzheimer and Autism they enable the clients and the carer, loved

ones, family and friends an interaction tool. Their design and development team can work with their customers to modify or make special needed products if required. All their products are proudly made and produced in Ballarat Victoria. Products can be purchased directly from their premises or via Credit card and Emails.

[www.hemco.com.au](http://www.hemco.com.au)



### HILINE HOME MODIFICATIONS

#### Stand 578

Introducing ""Shower Bay"" a safe and portable shower designed for wheelchair users. Shower Bay offers a true shower experience without requiring dangerous wet-environment transfers or expensive home renovations. Also displaying Multi-Fit adjustable chair and bed raisers as well as Rubber Threshold ramps.

[www.hiline.net.au](http://www.hiline.net.au)



### HLS HEALTHCARE

#### Stand 612

At the heart of the healthcare industry, HLS Healthcare work tirelessly to source and stock the most highly rated equipment and furniture solutions in all of Australia.

They choose the most impeccable, stringently tested disability and elderly support equipment, to provide comfort, convenience, and security to people across Australia.

[www.hlshealthcare.com.au](http://www.hlshealthcare.com.au)



### HMR HEALTHCARE

#### Stand 298

HMR Healthcare is Australian owned and operated, based in Victoria. HMR distributes the very best in design and quality Healthcare Brands throughout Australasia.

Established due to the high demand for assistive products that make people feel safer, that are of an extremely high quality and products that have design in mind that they can be proud to have on show in and around their place of residence.

HMR Healthcare prides itself on providing exceptional customer service, their ability to get you the best brands and having a consistent and reliable supply of products when you need it. HMR will continue to bring you an exclusive range of products that are a joy to own and use.

[www.hmr-healthcare.com.au](http://www.hmr-healthcare.com.au)



### HOMEABLE

#### Stand 650

Homeable is a smart home technology provider, with a focus on creating accessible smart home solutions for people with disability and aged care. Their team of experts can design and install bespoke smart home solutions that align with their clients' unique needs and goals.

From voice-activated lighting to smart blinds and doorbells, Homeable's accessible smart home solutions will ensure that everyone feels safe, independent, and comfortable where it matters most - the home.

[www.homeable.com.au](http://www.homeable.com.au)



### HOMELIFE TECHNOLOGY

#### Stand 572

HOMELife Technology's mission is to supply easy-to-use products that enhance life, independence & personal wellbeing.

They are the exclusive suppliers of HUG by LAUGH, RELISH Music Player, ROBIN Day Clocks, FLIPPER easy-to-use TV remote, RAVENCOURT products and they are Australia's Connected Photo Frame specialists, with Australia's widest range.

Fully Australian owned and with over 40 years' experience in consumer technology and aged care, they carefully curate their products to ensure they are only providing best-in-class products, making your choice easy and providing peace of mind with helpful local Australian support.

[www.homelifetech.com.au](http://www.homelifetech.com.au)



### HOSPEQUIP

#### Stand 316

HospEquip has established itself as the "Go-To" company for friendly, expert advice trusted by healthcare professionals and individuals. An industry leader within Aged Care, Hospital, Home Care, NDIS and Rehabilitation across 5 locations in Australia, their team are experts in sales, hire and preventative maintenance for medical equipment. A curated group of quality products include electric beds, pressure care mattresses, wheelchairs and scooters, bathroom and shower aids. Their customers are their priority, which is why HospEquip is a registered NDIS provider as well as an Allianz contracted supplier for DVA equipment, ensuring they supply the best products to suit your needs.

[www.hospequip.com.au](http://www.hospequip.com.au)



### HUMANWARE

#### Stand 354

HumanWare is the global leader in assistive technology for people who are blind or have low vision. HumanWare offers a wide range of innovative products, including the BrailleNote Touch, first Google certified braille tablet, the iOS compatible Brailiant braille displays, Victor Reader®, the world's leading family of digital audiobook players, the unique Prodigy® family of desktop and portable vision and reading systems, and the ultra-portable explore line of electronic handheld magnifier.

[www.humanware.com/en-australia/home](http://www.humanware.com/en-australia/home)



### IMG COMFORT

#### Stand 626

IMG (Internasjonal Møbel Gruppe) is located in Sykkylven, Norway - famous for its steep mountains and deep fjords as well as the production and development center for Scandinavian comfort recliners. As part of the Ekornes group, IMG's passion is to engineer and design furniture that delivers world leading comfort and back-saving ergonomic support. Their vision is to create exclusive designs that deliver an exceptional combination of comfort, quality and unsurpassed value.

Within every Lift Chair — you will discover IMG's drive for excellence. Their philosophy combines the science of body correct ergonomics with old-world craftsmanship and state-of-the-art technology. Their entire range is designed, engineered and tested by their Norwegian product development team and produced in their own vertically integrated manufacturing company in Thailand.

[www.imgcomfort.com](http://www.imgcomfort.com)



### INDEPENDENCE AUTOMOTIVE

#### Stand 30

Independence Automotive provides high quality, comfortable vehicle adaptations to enhance vehicle independence for people with mobility challenges. They specialise in modifications to help people drive, whether this is a set of High-level joystick driving controls driving from wheelchair or a simple spinner knob. The team at Independence Automotive will do their best to help match a wide range of products to best suit your or your clients' specific needs. They are a family owned and operated business in Carrum Downs, Victoria.

[www.independenceautomotive.com.au](http://www.independenceautomotive.com.au)



### INDEPENDENT LIVING SPECIALISTS (ILS)

#### Stand 182

At Independent Living Specialists (ILS) their clients are the heart of everything they do. Their team includes over 70 expert assistive technology professionals, who provide healthcare equipment solutions with one goal in mind: to improve the social, physical and mental wellbeing of their clients as they move through life. The ILS team works across ILS Kids (Paediatric Equipment), Rehab (Configured Mobility), Home and Community Care, and Hospital & Pressure Care, as well as their continually growing network of showrooms.

[www.ilsau.com.au](http://www.ilsau.com.au)



Yes, you can.®

### INVACARE

#### Stand 336

Today, Invacare is a global leader in the worldwide market for medical products and services used in the home. Invacare designs, manufactures and distributes an extensive line of innovative home and long-term care medical products and services that promote recovery and active lifestyles. The company has 5,400 associates and markets its products in approximately 80 countries around the world.

[www.invacare.com.au](http://www.invacare.com.au)



### K CARE HEALTHCARE SOLUTIONS

#### Stand 112

Established in 1976, K Care Healthcare Solutions is an Australian-owned and operated industry leader; in designing, manufacturing, distributing, and supplying Assistive Technology for domestic and overseas markets.

Working alongside leading allied health and medical professionals, K Care Healthcare Solutions develops solutions that meet the needs of people living with disability; and equipment that meets the best practice requirements for Hospitals, Aged Care facilities, Medical clinics, and homecare environments.

Homecare distribution and supply of products is via an extensive Australian healthcare dealer network. See them at ATSA and learn more about how K Care are helping Australians live fulfilled and independent lives.

[www.kcare.com.au](http://www.kcare.com.au)





## RICON WHEELCHAIR LIFTS UNWIN PASSENGER RESTRAINTS

Unwin provide top quality transport accessibility restraint options focusing on safety, comfort and security for the passenger, whilst remaining user-friendly.



Ricon specialise in the manufacturing of wheelchair lifts for vans, recreational vehicles and passenger rail.



156 Beringarra Ave, MALAGA WA 6090  
email: [reception@kevrek.com.au](mailto:reception@kevrek.com.au)  
website: [www.kevrek.com.au](http://www.kevrek.com.au)  
Ph: (08) 9248 5922 Fax: (08) 9248 5966



### KEVREK (AUSTRALIA)

#### Stand 258

Kevrek (Australia) is the national importer and distributor of the Ricon wheelchair lifts and the Unwin passenger restraints in Australia. A family-owned and operated company for over 30 years, Kevrek is committed to providing the consumer with the knowledge, experience and product support for the mobility industry.

[www.kevrek.com.au](http://www.kevrek.com.au)



### KISA

#### Table 2

KISA stands for Keep It Simple Always a complete solution to help the elderly, the vulnerable and people with disability to stay safe and maintain independence, while also helping their carers and relatives enjoy peace of mind.

[www.kisa.com.au](http://www.kisa.com.au)



### KONNEKT

#### Table 16

Konnekt Videophone and Captioning Videophone

#### Captioning Videophone:

- Designed specifically for deaf and hard-of-hearing seniors.
- Regular phone calls, plus video calls for reading lips/faces, with private captions.
- Government-funded. Just \$5 / month with unlimited calls and video calls.

#### Konnekt Videophone:

- Incredibly easy one-touch video calling.
- Designed for elderly, low vision, dementia, shaky hands, disability or non tech-savvy.

- Automatically answers trusted nominated carers with 2-way video and sound.
- Supports independent living, or care-home residents.
- Government-funded via NDIS, MyAgedCare, DVA, JobAccess EAF.

[www.konnekt.com.au](http://www.konnekt.com.au)



### LA TROBE UNIVERSITY

#### V2

The Centre for Technology Infusion collaborates with local and international partners to research, develop and test next generation technology solutions.

One of their key focus area's is assistive technologies and their potential to improve the accessibility of public transport. They are currently working on these projects:

- Solving the platform gap issue: Bridging the Gap: Automated Ramps for Inclusive Commuting
- Making Automated Transport inclusive

<https://www.latrobe.edu.au/research/centres/cti>



### LEGRAND CARE

#### Stand 508

Legrand Care is a Global brand specialising in the innovative development of connected solutions for the health and social care sectors. With over 40 years' experience in delivering outstanding, innovative products that clearly set the standard for others to follow, Legrand Care is pioneering the use of digital technology in Technology Enabled Care with a range of products which are all designed and manufactured in-house. Through consumer insight, customer research and cutting-edge design, Legrand Care can deliver tomorrow's technology today.

With over 600,000 NOVO units installed globally to date, they have been working for over 4 years in the Australian market preparing to take advantage of the current market transitioning to 4G.

[www.legrandcare.com.au](http://www.legrandcare.com.au)



### LIKE FAMILY

#### Stand 650

Like Family is on a mission to reduce social isolation and loneliness. They help Australians who are ageing, ill, injured or living with disability to connect with social support in their local area. Their support workers, who they call Social Carers, can help you increase independence, participate in the community, and enjoy life through activities like: • help with household tasks • meal preparation and groceries • arts & craft • health & wellbeing • transportation • buddy for social events.

Their flat hourly rates are 20% below the NDIS price guide, and can be paid for using your NDIS funds, home care package or privately. If you're looking for social support

for yourself, a loved one or a client.

[www.likefamily.com.au](http://www.likefamily.com.au)



### LINAK AUSTRALIA

#### Stand 310

MEDLINE® & CARELINE® is a LINAK segment focusing on reliable actuators and medically approved actuator systems for healthcare applications. This includes beds, couches/tables for treatment, and chairs for hospitals, nursing homes or treatment centres, as well as patient lifts and wheelchairs.

Since the early 1990s, MEDLINE & CARELINE has maintained a worldwide position as a leading supplier of cutting-edge solutions. The aim is to help customers stay ahead in a dynamic market and ultimately improve the lives of patients and carers in hospitals, nursing homes, various treatment centres and private homes worldwide.

[www.linak.com.au/segments/medline-careline](http://www.linak.com.au/segments/medline-careline)



### LINCON BUILDERS

#### Table 34

Lincon Builders are leaders in the Home and Building Modification Space throughout Victoria. Lincon Builders can provide Concept Drawings, Engineering and Project Management that delivers professional outcomes that work.

[www.linconbuilders.com.au](http://www.linconbuilders.com.au)



### LINDS REHABILITATION EQUIPMENT

#### Stand 388 and 404

Linds Rehabilitation Equipment is an Australian family owned and operated business which was founded in 1965. Over half a century later, Linds Rehabilitation has grown to become an industry leading, experienced, and respected supplier of complex wheelchair solutions to the healthcare industry throughout Australia. Linds Rehabilitation will be showcasing the Amylior powerchair range including the Ascent Stander, Motion Composites range of carbon fibre light-weight manual

wheelchairs, PDG range of Tilt-in-Space wheelchairs, including the new T50 Take-Apart, Active Controls alternate control positioning systems, the Switch-It specialty controls and switches, a variety of seating solutions (including Dynamic options) the Ibis Nuage along with a variety of powered mobility options including the Klaxon powered attachments for manual wheelchairs and much more.

[www.lindsrehab.com.au](http://www.lindsrehab.com.au)



## HOME & BUILDING MODIFICATIONS



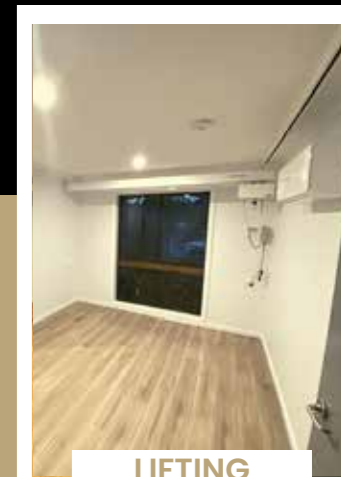
KITCHENS



BATHROOMS



ACCESS RAMP



LIFTING TRACKS

**WE'RE COMMITTED TO QUALITY AND EXCELLENCE**

[www.linconbuilders.com.au](http://www.linconbuilders.com.au)



### WE WOULD LIKE TO HEAR FROM YOU!

Get in contact with us if you have any **questions**, would like a **no obligation free quote** or to get your **home & building modifications** completed.



1300 885 192



[info@linconbuilders.com.au](mailto:info@linconbuilders.com.au)





### LINK ASSISTIVE

**Stand 270**

Link Assistive are an Australian supplier of Assistive, Interactive and Sensory Technology for individuals with physical, cognitive and developmental disabilities. Their team of assistive technology, mounting and sensory specialists includes Speech Pathologists, an Occupational Therapist, IT and Repair Specialists and Administration and Logistics staff. Their products are designed for accessibility and optimal user experience. They work with therapists and their clients to ensure compatibility with the user's needs and existing technology systems.

[www.linkassistive.com](http://www.linkassistive.com)



### LODGESONS LTD

**Stand 196**

Lodgesons are the market leader for wireless (spinner) keypad controls. They sell worldwide and have a global reputation for quality, hi tech, plug-in products. They are 100% focused on this type of technology which enables them to provide both our customers and specialist installers with the most advanced and ergonomic solutions available.

"I have been installing Lodgesons for approximately 14 years, and in that time not one single failure. Great products, fantastic support, guaranteed customer satisfaction." - Troy Rowe, Freedom Motors, WA

"I have right side hemiplegia and without the Lodgesons control I would not be able to drive. Best product out for disabled drivers" - N. Murphy, Western Australia

Visit stand 196 to see their soft-touch, quick release spinner and keypad products.

[www.lodgesons.co.uk](http://www.lodgesons.co.uk)



### LUDDI

**Table 4**

LUDDI is on a mission to bring modern assistive technology that looks and feels good. They are not afraid to tackle taboo's, and they're proud to release the first sex toy for all bodies. Come and meet the ZIGGY.

[www.luddi.co](http://www.luddi.co)



### LUSIO REHAB

**Stand 650**

LusioMATE is specifically designed to drive greater adherence to PT goals both within, but especially outside of, the clinician appointment. As part of a home exercise program, clinicians are able to monitor progress and update Movement Goals remotely via the in App dashboard. The small size of the proprietary Lusio Sensors enables the motivation of both Gross and Fine Movement Goals, giving LusioMATE a distinct and unique advantage over most other wearable and / or motion sensors on the market. LusioMATE is easy to use and super flexible, and with the LusioMATE hardware pack small enough to pop in a bag and take anywhere. It truly is a physical therapist in your pocket.

[www.lusiorehab.com](http://www.lusiorehab.com)



### MAGIC MOBILITY

**Stand 104**

Magic Mobility is Australia's premier power wheelchair designer, developer, and manufacturer. Their focus is on creating customised wheelchairs tailored to individual needs. They're determined to push the boundaries of what power wheelchairs can achieve and above all provide users with choice.

Their all-terrain wheelchairs help bring more aspirational goals within reach because they take you where you need to go and help you stay comfortable for longer.

The modular design enables easy adaption with seating and accessories as your goals and needs change. This makes a Magic Mobility power wheelchair cost less to own and operate over its lifetime.

[www.magicmobility.com.au](http://www.magicmobility.com.au)



### MAXTECH SOLUTIONS

**Stand 648**

MaxTech Solutions is your home automation disability specialist bringing technology to life. They have over 6 years' experience in disability and the NDIS and over 25 years working with technology.

They can help you increase your independence with Doors, Lights, Blinds, Video intercoms, Mechanical Beds, Gates and much more let them know what you're having trouble with.

Think big - they have controls customised to ability - Voice, App controls, Sensors, Eyegaze, Face recognition and Fingerprint recognition.

Contact them for: Free Quotes and home

assessments; Zoom/Teams meetings with you and your OT, Tell them about your goals.

[www.Maxtechsolutions.com.au](http://www.Maxtechsolutions.com.au)



### MEDIFAB

**Stand 350**

Shaping better lives since 1990. Grown from small beginnings, the Medifab and Spex story is driven by a single-minded purpose - to bring comfort and functionality to people living with disabilities.

They design and manufacture specialist seating and high-quality clinical equipment for children and adults with complex medical needs. Established with a genuine passion to help, they innovate to create breakthrough technologies, so their clients can manage their daily physical and cognitive challenges with the dignity they deserve.

Working closely with therapists, carers and clients, their customer-focussed approach and 'whatever it takes' attitude is at the heart of everything they do.

[www.medifab.com.au](http://www.medifab.com.au)



### MEDISTAYS

**Stand 650**

MediStays is a nationwide service connecting Australians and their families with the best accommodation option to support a hospital visit, respite or disability-related stay. Whether you're a patient on your way to hospital, a friend or family member paying a visit, a person with a disability looking for accommodation as part of your NDIS plan, or a health worker supporting your patients, MediStays makes it easy to find a safe, comfortable place to stay, so you can focus on the important things.

[www.medistays.com.au](http://www.medistays.com.au)



### MEDIX21 AUSTRALIA

#### Stand 390

Medix 21 are dedicated to supplying high-quality assistive technology solutions that meet the needs of their valued customers. Their team is committed to delivering exceptional customer service, and their product advisors can offer tailored training and education across our portfolio. They take pride in offering personalised support and solutions for your assistive technology needs. Medix21 is helping you move ahead.

[www.medix21.com.au](http://www.medix21.com.au)



### MELROSE WHEELCHAIRS

#### Stand 236

Specialising in a range of cutting-edge AT, Melrose Wheelchairs is known as a high end supplier of manual wheelchairs, sports chairs and power assistance, their sister company Adaptive Concepts Australia leads the market in recreational equipment across hand cycling, sit skiing. They love to push boundaries!

[www.melrosewheelchairs.com.au](http://www.melrosewheelchairs.com.au)



### MEMORY MACHINE

#### Stand 570

Memory Machine is a ground-breaking and unique App dedicated to support people living with memory loss, their carers, family, and friends. A communication hub like no other it helps with the challenges of forgetfulness, losing things, repeating, social isolation and scheduling. Affordable and accessible it is designed to help

people living with mild memory loss through to late-stage dementia. Memory Machine are dedicated to supporting dignity and independence.

[www.memorymachine.com.au](http://www.memorymachine.com.au)



### MERITS AUSTRALIA

#### Stand 260

Merits Australia is the Importers & distributors of the Merits range of state-of-the-art mobility & healthcare equipment. Products including a modern well-appointed full scooter range, folding scooters, pull apart scooters, also medium & large scooters with weight capacity over 200kg. A modern well-appointed full range of power chairs including small compact transportable pull apart & folding to medium & large with weight capacity over 200kg & also a modern well-appointed range of rehab power chairs with options of power tilt, power recline, power leg rest & power seat lift. Also, a large range of manual equipment, rollators, wheelchairs & bathroom products. Merits Australia dealer network has coverage across all of Australia.

[www.meritsaustralia.com](http://www.meritsaustralia.com)



### MINDCLIMB

#### Table 10

MindClimb is overseen by an Occupational Therapist and delivers enthralling and innovative new therapy using a vast array of advanced climbing equipment, including the best automatic belays, elevated challenges and large augmented reality systems. Numerous studies confirm the benefits of therapeutic climbing on physical and mental health. Participants love the extensive facility and are much more engaged and regulated compared to typical small, mundane therapy rooms.

Suitable for NDIS funding, MindClimb improves cognition, fine/gross motor skills, social participation, and communication skills, whilst building friendships. The on-site café provides participant snacks and barista coffees for relaxing parents.

[www.clipnclimberwick.com.au/mindclimb](http://www.clipnclimberwick.com.au/mindclimb)



### MOBILITY ACCESS MODIFICATIONS

#### Stand 309

Mobility Access Modifications specialise in minor & major home modifications, including, major bathroom modifications, stepless showers, grab rails and more. Their ramps, platform steps and banister rails are Australian designed, manufactured and constructed in their Melbourne warehouse. They are service providers for: DVA, NDIS, Multiple Victorian Health Organisations, Home Care Package Providers and Private Clients. Their services: Estimate, Measure, Consult, Design, Quote & Construct. Areas they service: Greater Melbourne.

“We Focus On The Safest Solutions For Our Customers Today & Strive For Innovation For Our Customers Tomorrow”

[www.mobilityaccess.com.au](http://www.mobilityaccess.com.au)



### MOBILITY AIDS AUSTRALIA & INDEPENDENCE AUSTRALIA

#### Stand 582

Mobility Aids Australia is one of Victoria's leading mobility aids specialist retailers. With more than 30 years' industry experience, they are committed to providing the best service, advice, and

support for all your mobility equipment, accessories and associated equipment needs. They work with the NDIS and the DVA and are contracted equipment providers to the TAC & WorkSafe. Servicing the Home Care Package arena is their speciality.

With an extensive product range, knowledgeable consultants and service technicians and an inhouse Occupational Therapist they provide expert advice to users and clinicians. Their aim is to provide products that are 'fit for purpose', 'delivered right, the first time' at a fair price. As a Social Enterprise, any excess funds raised directly support the disability and aged care communities.

[www.mobilityaids.com.au](http://www.mobilityaids.com.au)



### MOBILITY AND ACCESSIBILITY FOR CHILDREN IN AUSTRALIA LTD (MACA)

#### Table 13

Mobility and Accessibility for Children in Australia (Ltd) is a not-for-profit registered charity dedicated to advancing the rights of children with disabilities and medical conditions to safe and accessible transport. MACA is leading an unprecedented research and development program to support safe and equitable transport of children with disabilities and medical conditions.

They translate this research into independent and practical information, resources, and training to strengthen the system so that it can better meet the motor vehicle transport needs of families of children with disabilities and medical conditions.

[www.macahub.org](http://www.macahub.org)





### MOBILITY ENGINEERING

#### Stand 164

At Mobility Engineering, they specialise in vehicle mobility solutions that provide independence to people across Australia. Their mission is to improve the lives of Australians by empowering them to be independently travelling in the vehicle of their choice. They do this by providing Australia's largest range of Mobility Adaption products for vehicles and operate a nationwide network of installers.

Their range of products will ensure that no matter your ability and strength, they can tailor a solution that can get you driving and enjoying the independence you deserve!

[www.mobilityengineering.com.au](http://www.mobilityengineering.com.au)



### MOBILITY PLUS WHEELCHAIRS

#### Stand 282

Mobility Plus is a family-owned leading Australian Manufacturer and national provider of Assistive Technology. This includes their Australian Made custom manual day and sports wheelchairs, a huge range of power assist options, recreation equipment, power wheelchairs, vehicle solutions, manual handling equipment, paediatric equipment and more. For 40 years now, they have been making our Australian Made manual wheelchairs right here in Melbourne. Their focus is to design and make something that is truly made for the individual.

[www.mobilityplus.com.au](http://www.mobilityplus.com.au)



### MOLMIKÈ MEDICAL

#### Stand 540

Molmike Medical is a leading consumables supplier, committed to delivering innovative solutions that empower and improve the lives of patients and healthcare providers.

They understand that their customers are at the heart of everything they do. That's why they are committed to providing exceptional customer service, from their ground breaking plan management tool which streamlines order processing - to their timely delivery and extensive after-sales support.

With a team of highly skilled and dedicated professionals - including a dedicated Concierge Service - Molmike Medical is poised to revolutionize the healthcare consumables industry. Join them on this exciting journey as they continue to innovate, empower, and ensure all their customers receive the very highest standard of care.

[www.molmike.com.au](http://www.molmike.com.au)



### MOTION WHEELCHAIRS

#### Stand 602

Founded in 2003, marking 20 years in the Industry Motion Wheelchairs focuses on enhancing mobility for adults and children, by providing customised and flexible solutions for both Power and Manual Wheelchairs as well as Commodes.

All their products including powered and manual wheelchairs and commodes, can be customised to suit each individual's needs.

Motion Wheelchairs have many off the shelf components to choose from or

have custom designed and manufactured components, that can enhance their moulded seating solutions.

They offer: State of The Art technical workshop/full engineering facilities; An onsite upholstery workshop and service; Fully equipped fitting rooms, with ceiling and mobile hoists; their offices are fully accessible and are equipped with wheelchair friendly facilities and Coffee and tea making facilities for clients, their carers and therapists.

[www.motionwheelchairs.com](http://www.motionwheelchairs.com)

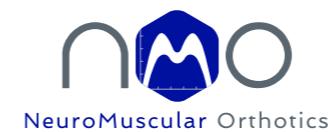


### NEEKI DESIGNS - WONDER SHEET

#### Stand 36

The Wonder Sheet (WS) is a unique style of fitted bed sheet owner Dominique Sanday designed for her dad who had Parkinson's disease. Turning over and getting in and out of bed was becoming difficult for him. It's all because of the satin panel, which is under your shoulders, back and hips. People with other mobility issues tried the WS and got the same result; Increased mobility, more independence and less effort required. Please come and see their display and Dominique will show you how it works. Turning over independently with less effort is now possible.

[www.thewondersheet.com.au](http://www.thewondersheet.com.au)



### NEUROMUSCULAR ORTHOTICS

#### Stand 308

NeuroMuscular Orthotics is a specialist in providing complex upper and lower limb orthotic management to clients who present with neuromuscular disorders.

With over 80 combined years in clinical and technical expertise we provide services to Melbourne, Sydney and the Gold Coast. NeuroMuscular Orthotics work with clients to help them achieve their goals and live an ordinary life. They provide assessment and management using the latest advancements in orthotic componentry and are the only Australian orthotic facility to provide both lower and upper limb exoskeleton robotics including Keeego, FreeWalk and MyoPro.

[www.neuromuscular-orthotics.com.au](http://www.neuromuscular-orthotics.com.au)



### NEUROREHAB ALLIED HEALTH NETWORK

#### Stand 296

NeuroRehab Allied Health Network is a dedicated rehabilitation service catering to the unique needs of those with neurological injuries, as well as individuals seeking general rehabilitation.

Their multidisciplinary team provide comprehensive rehabilitation services to maximise outcomes. They tailor programs to clients of all ages, from those in a minimally responsive state to those wanting to learn to ride a bike again.

They utilise the most up-to-date rehabilitation techniques and are proud of our innovative facilities which offer the latest in rehabilitation equipment.

They also provide an extensive home visit service throughout Melbourne, with key services offered in Geelong, Ballarat, Ararat, Wangaratta, north-east regional Victoria, Albury and now Perth.

[www.nrah.com.au](http://www.nrah.com.au)



## Visit us at **Stand 50** to find out more about OTA and what an OT can do for you

Occupational Therapy Australia (OTA) is the peak professional body representing the interests of occupational therapists across the country as a key component of the allied health sector.

### VISIT OUR STAND TO LEARN:

- What occupational therapy is
- How to find an occupational therapist
- How OTA supports OTs and OT students
- How to become a member of OTA
- The #BenefitsOfBelonging to OTA
- What CPD and events we offer for OTs



To find out more about OTA and occupational therapy scan the QR code or visit [www.otaus.com.au](http://www.otaus.com.au)



### NIAGARA MEDICAL THERAPY

#### Stand 618

Niagara is committed to helping people of all ages gain improvement in the important areas of health and mobility. All Niagara CVT devices are listed on the Australian Register of Therapeutic Goods (ARTG) as a Class IIa Medical Device so you can be confident that there have been clinical studies and testing to support their therapeutic claims.

[www.niagara.com.au](http://www.niagara.com.au)



### NOVACORR HEALTHCARE

#### Stand 250

An Australian manufacturer of assistive technology furniture that is specific to their clients' requirements. They script each bed, mattress and chair to exactly what the client clinically and functionally needs with direction of the user and their assistive technology advisor, such as an occupational therapist. As well as ensuring they match within the colour and design of their client's decor. Novacorr consider pressure care, positional requirements, safety and mobility needs with each client to ensure the script and final product is made to exactly the needs of each person. Promising value for money, robust equipment solutions.

[www.novacorr.com.au](http://www.novacorr.com.au)



### NOVIS HEALTHCARE

#### Stand 204

With 20 years of experience in providing specialized equipment across the healthcare industry, Novis partners with world-class brands, to provide pressure care and patient handling solutions. Products include beds and accessories, therapeutic surfaces, seating and positioning, patient handling solutions, bathroom hygiene, mobility equipment, daily living aids, cognitive and falls prevention. Novis is committed to delivering successful patient outcomes through product innovation, professional collaboration, and clinical excellence.

Working collaboratively providing quality products to Aged Care Facilities and Home Care Communities.

[www.novis.com.au](http://www.novis.com.au)



### OCCUPATIONAL THERAPY AUSTRALIA

#### Stand 50

Occupational Therapy Australia is the peak professional body representing the interests of occupational therapists across the country. The association has over 12,000 members and aims to support, promote and represent the profession of occupational therapy as a key component of the allied health sector in Australia. Occupational Therapy Australia's vision is that people and communities are engaged in occupations that bring meaning and purpose to their lives, fostering health, wellbeing, participation and inclusion.

[www.otaus.com.au](http://www.otaus.com.au)



### OSCAR FURNITURE

#### Stand 314

Oscar Furniture, part of Oscar Group Australia, is a family owned and operated business, manufacturing quality Furniture in Australia for over 50 years, and specialising in highly customisable Lift Recliners. The groups recent acquisition of BedMaster© Australia has allowed a further development to their extensive range to now include a new range of home care beds and mattresses. Their highly dedicated team with extensive industry knowledge, are here to provide you with expert solutions, quality furniture and a personalised level of customer service.

[www.oscarfurniture.com.au](http://www.oscarfurniture.com.au)



### OTTOBOCK

#### Stand 20

All around the world, the Ottobock name stands for high quality and technologically outstanding products and services. With 50 sales, service subsidiaries, and export activities in over 140 countries across the globe, they are constantly in close contact with their customers.

Otto Bock Australia delivers quality, innovative mobility solutions. From paediatric through to geriatric, the Human Mobility product portfolio addresses a broad spectrum of needs across a wide range of age groups. Working with their distribution partners, they aim to deliver industry leading advice, support and service to patients, their therapists, and institutions.

“Quality for life”, the quality of life enjoyed by the people who use Ottobock products every day.

[www.ottobock.com.au](http://www.ottobock.com.au)



### PACIFIC VISION INTL AU

#### Stand 244

Pacific Vision International is a leading provider of quality innovative assistive technology, both hardware and software, which helps to enhance the lives of those who are blind or have low vision.

They travel the world to find the latest technological solutions and to keep up to date with available products and news. They take pride in being able to bring these to their clients as soon as they are released.

They offer a wide range of product solutions, from portable and desktop CCTVs to hand magnifiers, computer accessories including keyboards and software, media players, Daisy readers as well as a variety of Braille equipment.

They are passionate about what they do, and their highly qualified team is dedicated to providing customers with all the information needed to help them make an informed decision, and also to meet their requirements and budget.

Their mission is to supply product solutions that meet the complete needs of those living with vision impairment.

[au.1lowvision.com](http://au.1lowvision.com)



### PARA MOBILITY

#### Stand 370

Para Mobility is Australia's leading Aquatic Disability Equipment provider and Manufacturer of Assistive Technology enabling safer moving and lifting of diversely abled Australian's.

NDIS Registered, Australian Made & Owned, their specialist team can draw on 38 years' experience to provide advice & guidance on:

- Pool & Spa hoists
- Aquatic wheelchairs
- Car Access hoists (no vehicle mods)
- Ceiling Hoists, Adult Change Tables
- Accessible Bathrooms

[www.paramobility.com.au](http://www.paramobility.com.au)



### PARAGON MOBILITY

#### Stand 212

Paragon Mobility is the Exclusive Australian Distributor of several leading Assistive Technology Brands. Boasting a portfolio of Ki Mobility Manual Wheelchairs and seating, Raz Design Mobile Shower Commodes, Ride Designs Seating and Positioning, Therafin Accessories and Freedom Trax Off Road access devices, and a Nationwide Dealer Network, Paragon is here to assist. Drop by their stand and check out what's new.

[www.paragonmobility.com.au](http://www.paragonmobility.com.au)



### PEGASUS HEALTHCARE

#### Stand 76

Pegasus Healthcare is a leader in pressure injury prevention strategy in Australia. Their purpose is consistent and clear - to partner with health providers to cost effectively deliver reductions in pressure injury rates - both in facilities and at home. Pegasus has a comprehensive range of clinical evidence based high quality products including one of the broadest ranges of alternating air pressure mattresses available in Australia; bariatric and paediatric products; specialty beds, cushions and exit sensors; wheelchairs, commodes and other living aids. The range delivers a complete continuum of care across critical care, acute, aged care, rehabilitation units and the community at home.

[www.pegasushealthcare.com.au](http://www.pegasushealthcare.com.au)



### PEGGS

#### Stand 84

Peggs are portable clotheslines that allow the aged, those living with disability or reduced mobility to dry their laundry independently at home. Uniquely our Handy Line will hold 2-3 full wash loads and designed to accommodate bed sheets of all sizes. Our laundry assistive technology products help build capacity, independence and confidence while addressing falls prevention and energy savings. Ultra-lightweight, ready assembled and easy to use, NDIS, My Aged Care and DVA registered. Low-cost consumables which can be prescribed without the need for preapproval and ideal for Return to Work and those in rehabilitation.

[www.peggs.com.au](http://www.peggs.com.au)





### PERFORMANCE HEALTH ANZ

**Stand 684**

Performance Health - live life to the fullest. Manufacturer and distributor of leading mobility and ADL brands Days and Homecraft. Days has empowered personal mobility for over half a century and Homecraft, established in the 1940s offers the most extensive selection of daily living aids including bathing, toileting, kitchen & homecare aids available. Days and Homecraft were built with the spirit and belief that each carefully crafted product will empower you to lead your own life. Performance Health also represents some of the world's leading Neurological Rehabilitation assistive technology brands

including Saebo, AbleX and Rehabtronics, ELink and Tactee.

[www.performancehealth.com.au](http://www.performancehealth.com.au)



### PERMOBIL AUSTRALIA

**Stand 128**

Permobil is a leading manufacturer of power and manual wheelchairs, who have continued to innovate for individuals for over 50 years. Be sure to speak with one of their experts on stand 128 to have a demonstration or test drive a Permobil wheelchair or power assist device.

[www.permobil.com/en-au](http://www.permobil.com/en-au)



### PERSONAL INDEPENDENCE PROVIDERS

**Stand 300**

Personal Independence Providers has been delivering accessible building services to clients all over Melbourne since 1999. They provide improved accessibility to clients they are fortunate to complete building works for. They are fully registered and only use qualified and experienced tradespeople who deliver quality work and a team of people who respect and value the client for whom they are working for.

They are excited to exhibit their Flatpack Modular Toilet and Shower Combination (CarePort) and The Cut Down Bath. These innovations will transform independent showering, bathing and toileting solutions for the elderly and less able people.

[www.haleberrry.com.au](http://www.haleberrry.com.au)

spinal cord injury, acquired brain injury, stroke, cerebral palsy or other neurological disorders.

[www.physionxt.com.au](http://www.physionxt.com.au)



### PORTABLE MOBILITY MELBOURNE

**Stand 288**

Travelling from A to B with mobility issues has never been easier than with one of Portable Mobility Melbourne's lightweight folding travel mobility scooters, or portable folding electric wheelchairs. Travel by car, train, cruise, airline - the choice is yours. Experience the convenience and freedom of one of their portable travel scooters or folding electric wheelchairs today. They stock the best quality and design in each category that offer the user clear benefits over others.

[www.portablemobilitymelbourne.com.au](http://www.portablemobilitymelbourne.com.au)



Here at Peggs, we're about making life easier. Our Handy Line was the first of its kind, making hanging laundry accessible for those living with disability. We're driven by inclusion, equality, and togetherness.

We are an NDIS Registered provider and geat2GO supplier partner. Our products are DVA approved with Allianz Global Assistance and MyAgedCare approved.

We're reliable, like our products, and we provide customer service for the lifetime of our Handy Lines, which have a 10-year warranty.

# peggs

Making laundry a breeze

[www.peggs.com.au](http://www.peggs.com.au)



Scan for more information or contact us: 1800 111 811 | [hello@peggs.com.au](mailto:hello@peggs.com.au)



### PHYSIONXT

**Stand 642**

PhysioNXT- Your Next Step to Recovery & Wellness. Looking for a safe and effective way to practice walking with less hands-on assistance from therapists? Check out PhysioNXT! Currently, PhysioNXT is the ONLY CLINIC IN MELBOURNE, VICTORIA to house the Lokomat. This is a robotic device used to provide intensive, repetition of walking as part of a physiotherapy or rehabilitation program. It can be suitable for children and adults who have an impaired ability to walk because of conditions such as



### POSTURAL INNOVATIONS

#### Stand 292

What's happening under the covers? Many people with physical disability spend most of the day in bed. Are the covers hiding postural issues that need addressing? Could correct positioning overnight help to reverse some postural deformity?

Postural Innovations offer solutions for 24-hour postural management. They provide a range of services including consultation and advice on postural concerns and the manufacture of bed positioning devices for people with a disability. Their bed positioning devices include T, F and E blocks, trunk supports and side lying support systems. For more complex needs they can prescribe a full sleep system. These products help to restore symmetry, reduce secondary complications, and optimise function.

[www.pinn.com.au](http://www.pinn.com.au)



### POSTURE BALANCE

#### Stand 80

Posture Balance are one Australia's leading designers and manufacturers of ergonomic and daily-living products. Established in Melbourne in 1999, they focus largely on customized outcomes for clients, made available via a national network of trained distributors. They specialize in foam technologies that maximize pressure and temperature distribution, improved posture-support that can be tailored to each individual and increasing mobility options for home and office.

[www.pbhealthcare.com.au](http://www.pbhealthcare.com.au)



### PRIDE MOBILITY PRODUCTS AUSTRALIA AND QUANTUM REHAB

#### Stand 132

Dedicated to helping those with mobility needs live the highest quality of life, Pride Mobility Products® Australia is the Australian subsidiary of Pride Mobility Products Corporation, the world's leading innovator and manufacturer of personal mobility products.

Their family of brands include the iconic Jazzy® brand of power chairs, Go-Go® Travel Mobility, Pride Scooters, and Pride Power Lift Recliners. It also encompasses Quantum Rehab®, a leader in complex rehab power chairs with the iLevel® power seat elevation technology, as well as Stealth Products®, the foremost manufacturer of positioning components.

[www.pridemobility.com.au](http://www.pridemobility.com.au)



### QUANTUM RLV

#### Stand 430

Since the early 1980's, Quantum has been providing services and products to people who have Low Vision or Blindness. They have grown to be the largest supplier of Assistive Technology in Australia through a dedication to finding the right solution for every individual and providing the support and training services needed to make them successful.

Quantum supplies Assistive Technology solutions to the education, corporate and government sectors, as well as to the growing population of older Australians who are losing their vision due to conditions such as Macular Degeneration, Cataracts and Glaucoma etc.

[www.quantumrlv.com.au](http://www.quantumrlv.com.au)



## See the latest from Permobil

With the unveiling of future products and a showcase of updates to existing products, there is a lot to see and learn about on the Permobil stand this year.

[permobil.com/en-au](http://permobil.com/en-au)





### REHAB HIRE

#### Stand 432

Rehab Hire Pty Ltd is a dedicated sale and hire business specialising in the supply and prescription hospital and complex rehabilitation equipment in the Melbourne Metropolitan area.

Rehab Hire has recently become the Victorian Community Distribution Partner for Arjo Huntleigh. Arjo is a company dedicated, through their products and knowledge-spreading activities, to improve the everyday lives of people affected by reduced mobility and age-related health challenges.

At Rehab Hire, their team of Arjo Product Specialists are committed to set new benchmarks and provide solutions to enable clients, their families, and their caregivers to live their best lives.

[www.rehabhire.com.au](http://www.rehabhire.com.au)



### REHAB INSTALLATIONS

#### Stand 438

Rehab Installation Pty Ltd, is a registered Australian building company that specializes in professional home modifications to make everyday life accessible to those who are mobility impaired living in Melbourne, Victoria. They understand everyone has unique requirements and they offer their team's extensive knowledge to assist in making informed decisions on solutions for home modifications that can address a client's needs.

[www.rehabinstallation.com.au](http://www.rehabinstallation.com.au)



### REMARKABLE

#### Stand 650

Remarkable is the innovative startup accelerator made possible by Cerebral Palsy Alliance, committed to developing tech startups that positively impact people with disability and amplify human potential.

Remarkable will be hosting a number of innovative startups demonstrating a range of exciting technology products and services.

[www.remarkable.org](http://www.remarkable.org)



### ROARK DESIGN

#### Table 37

Roark Design started because owner Tom Carr is both a Mechanical Engineer and paraplegic. He was given a travel commode that was really suboptimal, it weighed 26kg, took 10 minutes to assemble with an allen key and was precarious to use.

He has designed a rigid commode that can both be used at home and when travelling. It is tailor made to the user's measurements like a high end wheelchair. The commode easily folds/unfolds in a minute and weighs 10kg.

Tom's aim is to offer a commode that enables the user to travel independently and spontaneously.

[www.roarkdesign.com.au](http://www.roarkdesign.com.au)



### ROVE

### ROVE WHEELCHAIRS

#### Stand 252

World's 1st - 3D printed titanium, fully customised wheelchair. ROVE Wheelchairs produce ultra-lightweight, highly customisable manual wheelchairs, utilising advanced manufacturing processes - all designed around you for your lifestyle.

Cutting-edge 3D printed aerospace-grade titanium lugs joined with carbon fibre and titanium tubes, ROVE Wheelchairs are set to be the lightest, most advanced wheelchair available.

They have re-designed the axle receiver with their proprietary 'flip-chip', giving added post-manufacture adjustment to the user. Their unique braking system reduces weight with a sleek design, while our high-flow upholstery gives the breathability every user wants.

ROVE Wheelchair process allows for improved customisation, fitment, modularity, and manufacturing efficiencies.

[www.rovewheelchairs.com](http://www.rovewheelchairs.com)



### SHOWERBUDDY

#### Stand 256

Showerbuddy, incorporated 2007 in New Zealand, opened for business in Australia as a new Australian company, Showerbuddy Pty Ltd in 2019.

After providing successful bathroom access solutions to thousands of users around the world, yet few Australians knew of the brand, the decision was made to bring distribution of the products back in-house.

Today Showerbuddy Pty undertakes extensive education and training for OT's, PT's and mobility equipment suppliers to broaden their knowledge of available solutions to ease suffering of disabled and elderly needing safe, comfortable and private access to their bathroom.

[www.shower-buddy.com](http://www.shower-buddy.com)



### SLEEP ELECTRIC

#### Stand 240

Sleep Electric is Australia's leading provider of high-quality adjustable beds, specialist mattresses, and electric lift chairs at low prices. They are a family-owned Australian business committed to helping people improve their health & mobility through better sleep.

They offer a free, convenient & friendly home demonstration service through their mobile showroom & they also have the option of visiting their warehouses by appointment.

Sleep Electric deals directly with the public, health care providers, the aged care community, and the NDIS. So, whoever you are, whatever your needs they have a solution for you.

[www.sleepelectric.com.au](http://www.sleepelectric.com.au)





### SLEEPTIME

#### Stand 628

Sleeptime is an Australian owned and operated, family orientated company. They pride themselves on providing the highest quality bedtime products in all of Australia. From adjustable beds, to naturally permeable sheets and pillows, they have got you all tucked in. The Sleeptime Mattress was developed with one purpose in mind, to ensure a great nights sleep. Each and every Sleeptime product is carefully designed and manufactured to our stringent quality standards. They pride themselves on having the highest quality adjustable beds & mattresses in all of Australia.

[www.sleeptime.com.au](http://www.sleeptime.com.au)



### STATE-WIDE EQUIPMENT PROGRAM (SWEP)

#### Stand 566

SWEP is funded by the Department of Health to provide subsidised aids & equipment, home and vehicle modifications, equipment repairs and maintenance, continence products, supplementary oxygen, laryngectomy consumables, and lymphoedema compression garments, to eligible Victorian residents.

[www.swep.bhs.org.au](http://www.swep.bhs.org.au)



### STATEWIDE HOME HEALTH CARE

#### Stand 172

Statewide Home Health Care bring the best in world-class design of independent living and health care products to Australian homes, hospitals, and aged care facilities. Their products are solution-focused, design-focused, and business-focused, but their true focus is on the comfort and safety of the person who uses them. Come see their range of premium German-engineered Volker Healthcare Beds and Australian made Healthcare Seating solutions on display.

[www.shhc.com.au](http://www.shhc.com.au)



### SUNRISE MEDICAL

#### Stand 96

Improving people's lives is part of Sunrise Medical's DNA. Since 1983, they've pioneered the era of the high-performance wheelchair, challenged conventions and led innovation. Today, Sunrise Medical is one of the most globally well-known and recognisable industry leaders in the design, manufacture and distribution of mobility products.

[www.sunrisemedical.com.au](http://www.sunrisemedical.com.au)



### SUPERYOU TECH

#### Stand 668

Superyou Tech - Access your World. Superyou Tech provides top quality and

innovative assistive technologies Australia-wide. Their range of advanced AT has been selected by their highly experienced clinicians for their quality, durability and competitive pricing.

Their focus is on providing the best possible advanced AT to assist NDIS participants. And they do it fast - because they don't believe in making you or your clients wait.

They support you with a seamless ordering system, fast delivery and the information and advice you need to recommend the right tech for every individual.

[www.superyoutech.au](http://www.superyoutech.au)



### TABTIMER REMINDERS

#### Stand 32

TabTimer™ supplies over 100 reminder devices to help people keep medicines, nutrition, hydration, toileting & personal care tasks on-time using assistive technology & assisted listening devices.

TabTimer supplies; timers, electronic pill boxes, automated pill dispensers, vibrating watches & clocks, talking watches & talking clocks, doorbell signallers, alerting devices, designed to help people remember medicines, personal care tasks, or assist with daily living requirements.

[www.TabTimer.com.au](http://www.TabTimer.com.au)



## AUSTRALIA'S ADJUSTABLE BED EXPERTS

- ✓ Accessible mobile service
- ✓ Adjustable & hi lo beds
- ✓ NDIS & homecare provider
- ✓ Electric lift & recliner chairs
- ✓ Specialist mattresses



Call 1800 600 600 to book your **FREE** home demonstration  
[sleepelectric.com.au](http://sleepelectric.com.au)





## THE MOBILITY STORE

### Stand 322

Empowering Your Independence. The Mobility Store team prides themselves on offering the most comprehensive selection of mobility aids and equipment available, all designed to make your daily life easier and more comfortable. With large and inviting showrooms located in Perth and Melbourne, you can browse a huge range of products and test them out to find the best solution to keep you active and independent. Their friendly and knowledgeable staff provide personalised advice and guidance to help you make the right choice for your unique needs.

[www.mobilitystore.com.au](http://www.mobilitystore.com.au)



**THEOREM**  
POWER LIFT RECLINERS

## THEOREM POWER LIFT RECLINERS

### Stand 140

Theorem Power Lift Recliners are designed to be a functional and fashionable addition to your living space, delivering customised comfort for years to come.

At Theorem, they are constantly updating their range with all types of consumers in mind, which is why they can offer uniquely beautiful furniture tailor-made for you.

After a long day, enjoy the benefits of inclusions, such as lay-flat positioning, power lumbar support, hidden cup holders, smart device charging, and more.

[www.pridemobility.com.au](http://www.pridemobility.com.au)



## THE REHABILITATION CENTRE

### Stand 6

The Rehabilitation Centre are importers and distributors of high-quality rehabilitation devices and assistive technology. They are the Australian agent for:

- Alber
- SMOOV
- THERA-Trainer
- CheelCare companion
- Gigantex Carbon wheels

[www.therehabcentre.com.au](http://www.therehabcentre.com.au)



theshapesunited.™

## THE SHAPES UNITED AND RECOVAWEAR

### Stand 520

The Shapes United is a brand for those with their own physical stories to tell.

The Shapes United own all of our differences; offering fashion that aims to be kind to the world and the people in it.

They make it possible for their customers to express themselves through adaptive and inclusive fashion and design. They choose a more sustainable lifestyle incorporating circular fashion.

The brand mixes urban cool with a bold and definitive style. The Shapes United are all about being brave, friendly, and fun while enabling everyone to embrace their own look.

"We are the shapes united  
#wearetheshapesunited"

[www.theshapesunited.com](http://www.theshapesunited.com)



## TIMOTION TECHNOLOGY AUSTRALIA

### Stand 202

TiMOTION is an industry-leading provider of electric linear actuators and supporting products.

Their team specializes in innovative and customized solutions for manufacturers of industrial, furniture, and medical equipment. They pride themselves in providing the best possible solutions to every one of their customers.

At TiMOTION, they know that any problem can be solved with the right technology.

Customizable electric linear actuators are used to enhance applications that hydraulic and pneumatic systems just don't fit. As your business partner, TiMOTION aims to provide the highest quality, customizable components at competitive prices.

"We believe in what we do and the products we create. We are TiMOTION."

[www.timotion.com](http://www.timotion.com)



# Electric Actuators for Medical Solution



Unit 8 / 1A Southpark Close, Keysborough 3173, Melbourne Victoria, Australia  
email: [salesteam.au@timotion.com](mailto:salesteam.au@timotion.com) / tel: +61 3 8725 0331







### TOPCAT HEALTHCARE & CONTINENCE AT CONQUIP

#### Stand 562

Topcat Healthcare is your NDIS registered "One stop shop" for all your Healthcare needs with over 40 brands and thousands of products to choose from. From continence products to skin care, urological and medical supplies, cleaning products, home equipment, adaptive clothing and sensory toys our ranges are always expanding. If you can't find what you're looking for just ask their friendly team.

Continence at Conquip is your family owned and run Victorian continence clinic with dedicated nurse/specialist's available for assessments and supports provided in clinic, via telehealth or in the home. Their team have expansive product knowledge to assist you in best choices to suit your needs.

[www.topcathealthcare.com.au](http://www.topcathealthcare.com.au)  
[www.conquip.net.au](http://www.conquip.net.au)



### TOP GUN MOBILITY

#### Stand 216

Top Gun Mobility is an Australian owned business operating since 2001, offering a wide, distinctive range of Mobility & Homecare products that will always exceed your expectations.

With over 100 retail outlets across Australia, their dealers are guaranteed to deliver an exceptional experience both before and after your purchase. Their "Freedom with Confidence" motto is subtle yet memorable, putting emphasis upon the reliability of their product range,

as well as their commitment to offering the best in the industry. With their high quality, high performing products backed by their industry best warranty, it's easy to see why Top Gun Mobility products are the consumers first choice.

[www.topgunmobility.com.au](http://www.topgunmobility.com.au)



### TOTAL ABILITY

#### Stand 190

Total Ability is the exclusive distributor of Fadiel Italiana products in Australia and New Zealand. Celebrating 10 years of success in giving people with disability, who love to drive, the opportunity to live out their dream and gain freedom and independence.

The broad range of hand controls and vehicle access products make it possible for people of all capabilities to drive their own vehicle independently and safely. Now with 5 high level assessment vehicles stationed around the country, clients have more access to trial all the hand controls available in their local area.

[www.totalability.com.au](http://www.totalability.com.au)



### TRIONIC AUSTRALIA

#### Stand 26

TRIONIC AUSTRALIA is a NDIS registered provider supplying premium Swedish outdoor walkers with 9-inch supersoft tyres or large 12 or 14-inch air-filled tyres. Free AT Advisor trials are available Australia-wide. Their products promote safe, secure outdoor exercise and enjoyment. The Walker models have a synchronised steering system and torsional frame flexibility to ensure all wheels maintain connection with the ground. Their off-road capable Trionic Veloped has a patented front climbing wheel. All models have all-terrain hub

brakes and a frame made from oversized 6061-T6 aluminium. Trionic Australia offer a 10-year guarantee (parts subject to normal wear excluded).

[www.trionic.com.au](http://www.trionic.com.au)



### TRIVIDA

#### Stand 534

Trivida® is the world's first wheelchair wheel that allows for uncomplicated, obstacle-free lateral transfers. Thanks to the revolutionary triatec technology, the upper segment of the wheel can be easily removed so that a lateral transfer from the wheelchair to the external seat (chair, bed, toilet) and vice versa is possible without any obstacles in the way. A pioneering solution for more inclusion and barrier-free living. Features: Plastic and Carbon Fiber, 24-inch wheel diameter, 150kg load-bearing capacity, Two-year warranty.

[www.trivida.com.au](http://www.trivida.com.au)



### TUNSTALL HEALTHCARE

#### Stand 94

Tunstall Healthcare is a world-leading provider of Connected Care and Connected Health solutions. Operating in 18 countries, their Connected Healthcare solutions play a key role in helping older people, and those with long-term health needs, to live safely and independently in their own homes.

With over 65 years of global experience, they offer a truly end-to-end solution, encompassing design and development, consultancy and service support, deployment and training, and triage and monitoring services.

Their Australasian operations in both Australia and New Zealand are long established managed service providers to government, retirement villages and community care organisations.

[www.tunstallhealthcare.com.au](http://www.tunstallhealthcare.com.au)



### TYREX SOLUTIONS

#### Stand 56

Tyrex manufactures a range of disability access products that are Australian made and are environmentally friendly. Tyrex ramps use recycled rubber and are an innovative access product that are ideal for indoor and outdoor use.

Their diverse range of off the shelf Standard, Made to Order or Custom Ramps have been designed to be safe, practical and cost effective. The ramps are anti-slip, anti-trip, highly durable and can be customised as required to suit most applications.

[www.tyrex.com.au](http://www.tyrex.com.au)

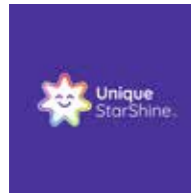


### UMPS

#### Stand 650

The Umps Link Personal Alarm works in harmony with your way of living. Day or night, receive support from a real person in seconds by activating your Umps Link from anywhere in your home. Designed and developed in Melbourne, the Umps Link also introduces a raft of innovative new features to support independence at home, including automatic smoke alarm detection, customisable cases, 40 hours of battery backup and more.

[www.umps.com](http://www.umps.com)



### UNIQUE STARSHINE

#### Table 32

Unique StarShine App has been created to empower, assist and support people of all ages who have a disability or special need. It is a virtual filing cabinet – providing easy access to your important documents anywhere/anytime in one convenient safe place! The App provides a platform for Individuals, Parents/Guardians, HealthCare Professionals, Specialists and support workers to communicate, manage, organise, share documents, make appointments and build strong rapport with each other. Giving the ability to monitor progress, goals, milestones and to encourage and support those under their care.

Supporting YOU through life's journey... making it easier for you and your loved ones.

[www.uniquestarshine.com](http://www.uniquestarshine.com)



### URGOFORM

#### Stand 596

Urgoform is a dynamic player in the provision of advanced Assistive Technology solutions. "Getting it Right Matters" is their mission, therefore skilled product application, new solutions and top customer satisfaction are what they deliver. As leading consultants to the wheelchair seating industry, they work with continual challenges that drive innovation and product development.

[www.urgoform.com.au](http://www.urgoform.com.au)



### VAHPA VICTORIAN ALLIED HEALTH PROFESSIONALS ASSOCIATION

#### Table 20

VAHPA – the Victorian Allied Health Professionals Association – is the specialist trade union which promotes and defends the industrial, professional and democratic interests of Allied Health Professionals.

VAHPA is a democratic membership organisation with their Branch Committee of Management elected from their membership.

In addition to workplace rights, VAHPA is strongly focused on the social justice aspects which make our communities more just and inclusive. They have been active in campaigns around equal marriage rights and refugee rights.

VAHPA is a proudly political organisation but are not affiliated to any political party, nor do they pay affiliation fees to any party.

[www.vahpa.asn.au](http://www.vahpa.asn.au)



### VALID (VICTORIA ADVOCACY LEAGUES FOR INDIVIDUALS WITH A DISABILITY)

#### Table 30

VALID advocates for people with a disability in Victoria, with a focus on intellectual disability, promoting their right to community presence, choice, respect and self-determination through information, training, and empowerment.

Individual advocacy, self-advocacy training and networks, systemic advocacy, training and consultancy and community development are offered.

Peer Action groups, as part of community development, are facilitated in metro and regional areas around Victoria, lead change in local communities by providing peer support and encouragement for people with a disability, their families and supporters to make a difference.

[www.valid.org.au](http://www.valid.org.au)



### VERVE OT

#### Table 18

Verve OT is a boutique provider of Occupational Therapy clinical and training services. As they only provide Occupational Therapy services, they have a high performing team of therapists with expertise across a wide range of clinical offerings. Verve OT delivers training webinars and workshops for OT's Australia wide on all things NDIS and clinical. They are highly regarded for our knowledge and expertise in the NDIS space, assisting other OT providers to provide quality and robust occupational therapy services.

[www.verveot.com.au](http://www.verveot.com.au)



### VIRTETIC

#### Stand 650

Virtetic is creating game-based virtual reality therapies for people living with limb loss. We are currently developing two solutions. The first one aimed to help people learn to use a prosthetic hand while they are waiting to get access to one. The second one aimed to help people suffering from phantom limb pain to manage their pain.

[www.virtetic.com.au](http://www.virtetic.com.au)



An App Designed with Love and Purpose.... with YOU in mind.



Unique StarShine is a tool to manage, organise, communicate and share documents with your multiple support networks and professional health workers all in the one convenient safe place!

It is a virtual filing cabinet - providing you the comfort, convenience and easy access to your vital documents anytime and anywhere at a moment's notice.

Created to empower, assist and support people of all ages who have a disability or special need.



[@uniquestarshine](https://www.facebook.com/uniquestarshine)

[@uniquestarshine](https://www.instagram.com/uniquestarshine)

[uniquestarshine.com](http://uniquestarshine.com)

LEADING WITH VISION

**Sunday 8 – Tuesday 10  
October 2023**

**RACV Royal Pines Resort,  
Gold Coast Queensland**

Join us at Leading with Vision, the ADIA Leadership Conference brought to you in partnership with ATSA, and take your business to new heights! Held on the beautiful Gold Coast, Leading with Vision is your opportunity to be inspired by fresh insights and network with industry leaders.

Featuring...



Entrepreneur and best-selling author, Mark Bouris AM



Triple Olympian, Lisa Curry AO



Former Olympic gymnast, Brennon Dowrick



The Sales Dr, Ingrid Maynard



The People Whisperer, Anneli Blundell

...and many more still to be announced, this is an event not to be missed.

**ATSA MEMBERS**

Bring your whole team and get exclusive member-only discounts on registration fees!

**Registrations open now!**

Book early to take advantage of the early bird and multi-ticket discounts.



**VICTORIAN PROJECT MANAGEMENT GROUP (VIC PMG)**

**Table 31**

Victorian Project Management Group (Vic PMG) is a NDIS registered Project Management provider. They specialise in supporting NDIS participants with their Home Modification and Project Management requirements.

Their team of registered building professionals and project managers specialise in all aspects of disability modifications.

Their aim is to complete your project from concept to completion with the least amount of disruption possible.

[www.vicpmg.com.au](http://www.vicpmg.com.au)



**WE COACH**

**Table 38**

Life coaching can change lives. For those who are ready to make a change and focus on a better version of themselves.

We Coach obsesses about their clients' successes and their experiences. Their NDIS Programs for pre-employment, start your own business, already employed and SLES have been changing lives for quite some time.

We Coach believe that for a person to succeed they need to be open to the change that is coming. Anyone can improve who they are by simply working on their mindset with the assistance of a qualified life coach. We Coach are National.

[www.wecoach.com.au](http://www.wecoach.com.au)



**WHEELABILITY**

**Stand 664**

Wheelability.com.au brings together the top products for wheelchairs from around the world and makes them easily available via simple online user interface to the wheelchair user Whether it be a new set of tyres or the worlds lightest carbon fibre wheels, casters, suspension forks and cushions Wheelability looks to provide those and much more at affordable prices online.

[www.wheelability.com.au](http://www.wheelability.com.au)



**WHILL**

**Stand 156**

WHILL power chairs are in a category all by themselves. With a focus on innovative design and state-of-the-art technology, WHILL products allow you to fully express your confidence, style, and independence. Whether you're driving around town or maneuvering indoors, WHILL power chairs give you the freedom to do the things you love.

[www.whill.inc](http://www.whill.inc)



**WHOLESALE MOBILITY**

**Stand 396**

Wholesale Mobility are an Australian owned and operated mobility equipment distributor that offers an extensive range of mobility scooters, electric wheelchairs and more. With exclusive rights to the mobility industry's most reputable brands, including Solax, Quingo, Kymco and E-Traveller.

[www.wholesalemobility.com.au](http://www.wholesalemobility.com.au)





### WILA INNOVATIONS

#### Stand 168

Visit the team of WILA Innovations to see the VICAIR pressure care range including the unique VICAIR O2 cushions, the first fully machine washable wheelchair cushions in the world.

Also, on display; OBI the first dining robot of its kind. The full range of VELA Tango Office and Active chairs, the FOCAL Dynamic Arm Supports and TIPY the one-handed keyboard with integrated mouse.

They look forward to meeting you and demonstrating the clinical benefits of their products for you.

[www.wila-products.com.au](http://www.wila-products.com.au)



access • communicate • connect

### ZYTEQ

#### Stand 52

Catch Zyteq's OT's presentation to find out about alternative computer access and communication devices. Product names include Grid Pads, QUHA Zono gyroscopic mouse, trackballs or joysticks, IntelliGaze, Lumin-i, Grid 3, and Mind Express 5. Combined access methods can work well, and switches operated by EMG Sip/Puff, can complement. Access mobile phones, control appliances (e.g. televisions), use the internet, send email, watch movies online, social media, or use voice output communication, the Zyteq team will be able to assist with suggestions to achieve your goal and advise the steps towards the best individualised solution.

[www.zyteq.com.au](http://www.zyteq.com.au)



## Check out a few new features happening this year...

### TEST TRACK

Thanks to Automobility, Freedom Motors, Mobility Engineering and Total Ability for supporting this initiative. The Test Track will be operating for the two days of the event. If you are wanting to get in the drivers seat or check out what you will see as a passenger, have a chat to one (or all) of the above companies and make it happen.

### HAVE A GO AREA - HALL 1

We are excited to have the team from Blind Sports and Recreation Victoria joining us for both days. Come down and have a hit – how well can you putt without seeing the ball??

We also have demos from Dejay Medical – Frame Runner and Frame Soccer, Medix21 – combined scooter and kick bike and an Adaptive Tricycle. Check out timetable at registration desk and in Hall 1 for new additions.

### MANUAL WHEELCHAIRS AVAILABLE AT REGISTRATION

Thank you to the team at Sunrise Medical for providing manual wheelchairs for attendees to use while visiting the show.

# Welcome to MELBOURNE SHOWGROUNDS

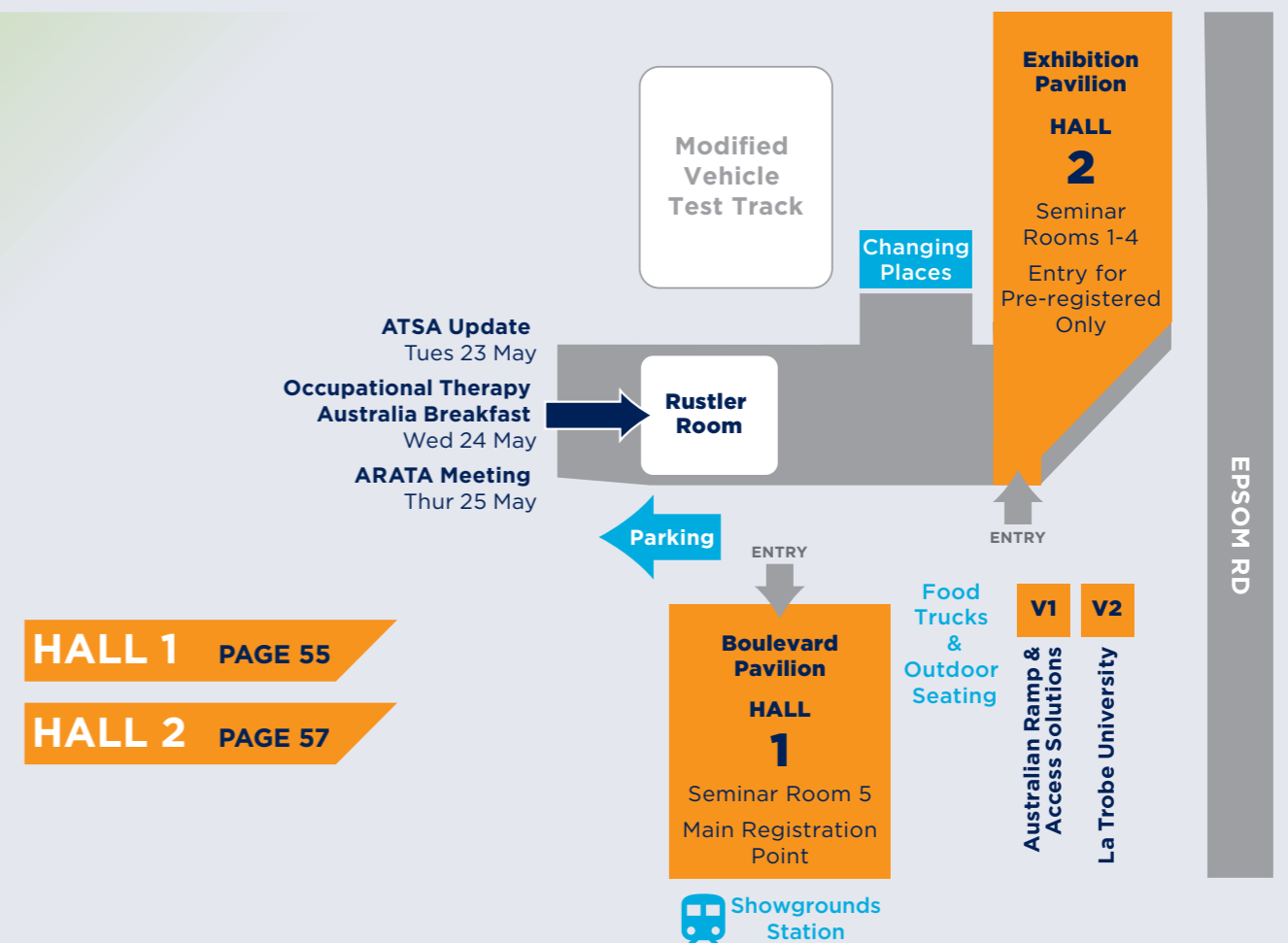
### SOCIAL MEDIA

We have a couple of roving photographers on the show floor. They will be taking shots for our social. We would love you to get involved and spread the word.

#ATSAExpo #IndependentLiving #AssistiveTechnology #DisabilityInclusion #ATSA2023

Remember to follow ATSA on LinkedIn and ATSAExpo on Facebook and Instagram.

Enjoy the show!

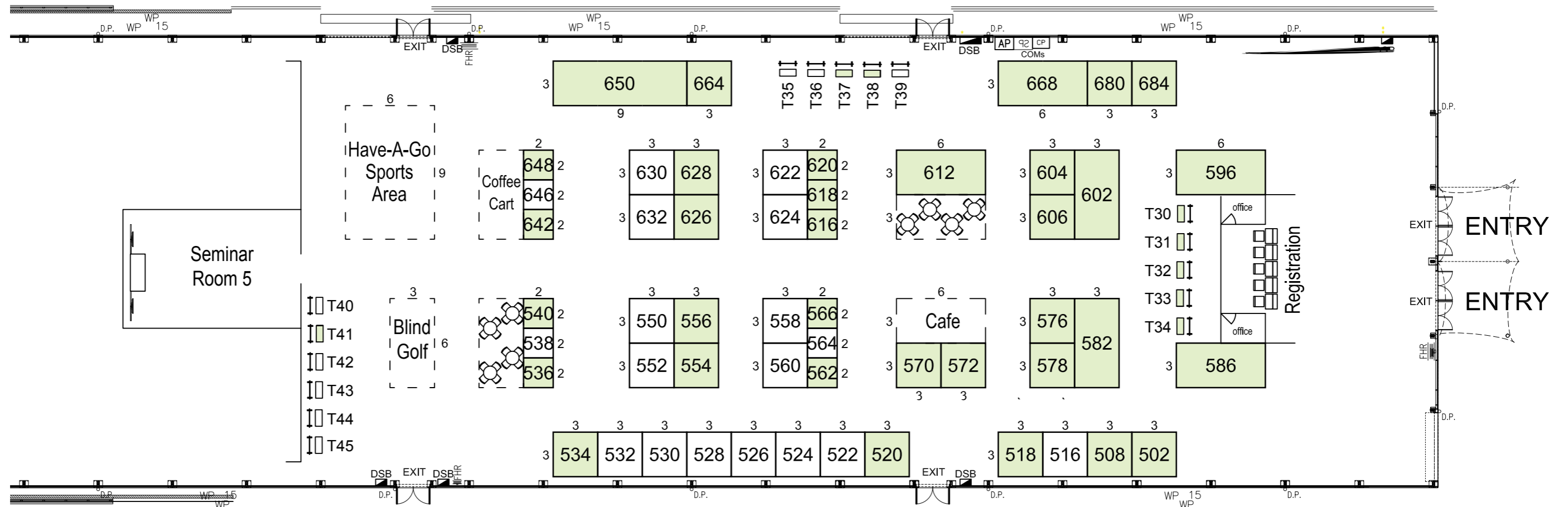


**HALL 1** PAGE 55  
**HALL 2** PAGE 57

## HALL 1

### EXHIBITOR LISTING

- |                                       |  |                       |  |
|---------------------------------------|--|-----------------------|--|
| 502 ATSA                              | 576 Allianz Partners                         | 628 Sleptime          | 684 Performance Health                   |
| 508 Legrand Care                      | 578 HiLine Home Modifications                | 642 PhysioNXT         | T30 Valid                                |
| 518 HEMCO Australia                   | 586 Atto Australia                           | 648 Maxtech Solutions | T31 Victorian Project Management Group   |
| 520 The Shapes United                 | 582 Mobility Aids and Independence Australia | 650 Remarkable        | T32 Unique StarShine                     |
| 534 Trivida                           | 596 Urgoform                                 | 650 Lusio             | T33 Easzilee                             |
| 536 Disability Safe Seating Solutions | 602 Motion Wheelchairs                       | 650 Medistays         | T34 Lincon Builders                      |
| 540 Molmike Medical                   | 604 Finch Healthcare                         | 650 UMPS              | T37 Roark Design                         |
| 554 Hafele Australia                  | 606 DewertOkin                               | 650 Virtetic          | T38 Wecoach                              |
| 556 Blue Badge Insurance              | 612 HLS Healthcare                           | 650 Like Family       | T41 Blind Sports and Recreation Victoria |
| 562 Sutton House                      | 616 Avant Innovations                        | 650 Homeable          |  |
| 566 State-Wide Equipment Program      | 618 Niagara Medical Therapy                  | 664 Wheelability      |  |
| 570 Memory Machine                    | 620 AAA Play                                 | 668 Superyou Tech     |  |
| 572 HOMELife Technology               | 626 IMG Comfort                              | 680 Conni             |  |



### HALL 2

## EXHIBITOR LISTING

- 6 The Rehabilitation Centre
- 12 Apex Mobility
- 20 Ottobock
- 26 Trionic
- 30 Independence Automotive
- 32 Tab Timer
- 36 Neeki Wondersheet
- 38 Avail
- 42 Aucuro
- 50 Occupational Therapy Australia
- 52 Zyteq
- 54 Cuddle Buddy
- 56 Tyrex
- 58 BrightSky
- 76 Pegasus Healthcare
- 80 Posture Balance
- 82 Deutscher Healthcare
- 84 Pegg's
- 86 Care Quip
- 88 Acorn Stairlifts
- 90 Healthcare Innovations Aust
- 94 Tunstall Health
- 96 Sunrise Medical
- 104 Magic Mobility
- 108 Country Care Group
- 112 K Care Healthcare Solutions
- 128 Permobil
- 132 Pride Mobility & Quantum Rehab
- 136 For-De Group
- 140 Theorem Power Lift Recliners
- 148 Astris PME
- 156 Whill
- 160 4Healthcare

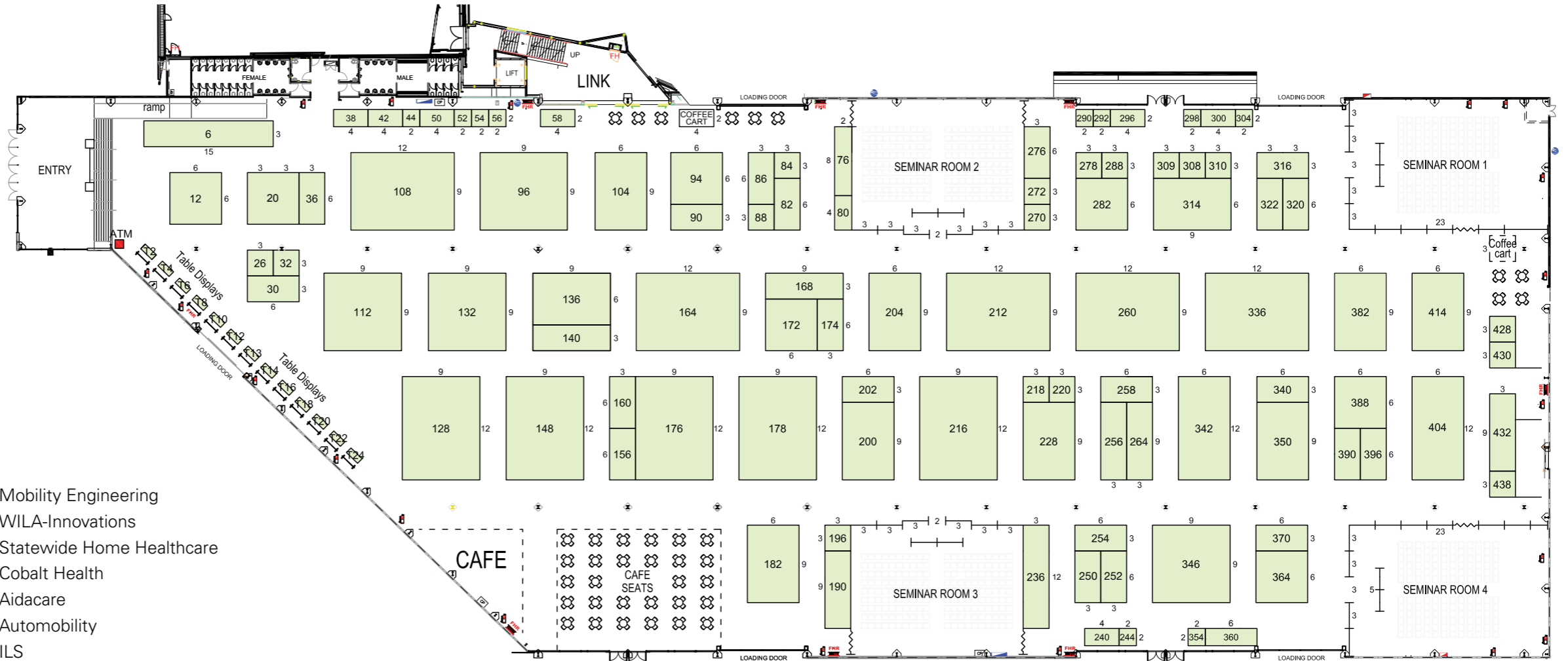
- 164 Mobility Engineering
- 168 WILA-Innovations
- 172 Statewide Home Healthcare
- 174 Cobalt Health
- 176 Aidacare
- 178 Automobility
- 182 ILS
- 190 Total Ability
- 196 Lodgesons
- 200 Dejay Medical
- 202 TiMotion
- 204 Novis Healthcare
- 212 Paragon Mobility
- 216 Top Gun Mobility
- 218 Canterbury Concepts
- 220 Handi Rehab
- 228 Fisherlane
- 236 Melrose Wheelchairs
- 240 Sleep Electric
- 244 Pacific Vision
- 250 Novacorr
- 252 Rove Wheelchairs
- 254 Brazier Mobility
- 256 Showerbuddy
- 258 Kevrek
- 260 Merits
- 264 Allegro Concepts

- 270 Link Assistive
- 272 DPS Publishing
- 276 Afikim Electric Vehicles
- 278 Avante Australia
- 282 Mobility Plus
- 288 Portable Mobility Melbourne
- 290 Guardian Safety Pendants
- 292 Postural Innovations
- 296 NeuroRehab Allied Health Network
- 298 HMR Healthcare
- 300 Personal Independence Providers
- 304 Active Adaptive
- 308 NeuroMuscular Orthotics
- 309 Mobility Access Modifications
- 310 LINAK Australia

- 314 Oscar Group
- 316 HospEquip
- 320 EveryBody eBikes
- 322 The Mobility Store
- 336 Invacare
- 340 DoAbility
- 342 Freedom Motors
- 346 Crescent Healthcare
- 350 Medifab
- 354 HumanWare
- 360 Forte Healthcare
- 364 Caremed Alrick
- 370 Para Mobility
- 382 GTK
- 388 Linds Rehab
- 390 Medix21
- 396 Wholesale Mobility

- 404 Linds Rehab
- 414 Active Rehab
- 428 Cogy Pedal Wheelchairs
- 430 Quantum RLV
- 432 Rehab Hire
- 438 Rehab Installations
- T2 KISA
- T4 Luddi
- T6 Grippers Non-Slip Socks
- T8 Allied OT
- T10 MindClimb Therapy
- T12 CARETEQ
- T13 MACA
- T14 ARATA
- T16 Konnekt
- T18 Verve OT

- T20 Vahpa
- T22 Amplify - Accessible Travel Specialists
- T24 Accessible Beaches
- V1 Australian Ramp & Access Solutions
- V2 La Trobe University



### HALL 2

## WEDNESDAY, 24 MAY 2023

	ROOM 1	ROOM 2	ROOM 3	ROOM 4
8.15-9.00am 45 mins	<b>BREAKFAST SESSION</b> Hosted by Occupational Therapy Australia			
9.15am 45 mins	<b>NDIS SESSION</b> Kirsten Flynn and Andrea Nolan	<b>Wheelchair and seating assessment and prescription tips for working with bariatric clients</b> Kate Pain & Romi Russek, Clinical Educator/AT Consultant - GTK	<b>Pressure mapping is not only used to compare cushions</b> Dr Barend ter Haar, Director, BES Healthcare Ltd	<b>Innovations in seating: the balance of technology and simplicity</b> Luke Meighan, Product Manager, Mobility and Seating: Invacare Asia-Pacific
10.30am 30 mins	<b>Parenting from a wheelchair</b> Curtis Palmer Assistive Technology Consultant - GTK and Tilly Brook, Clinical Education Specialist - Permobil Asia-Pacific	<b>Deep dive into alternating air mattresses</b> Leonie Brockman (Vic, SA/Tas) and Tish Huijbregts (Qld), Training and Development Coordinators - Aidacare	<b>Alternative Access to Computers and Devices</b> Caitlin Mah, Occupational Therapist - AT Consultant	<b>Functional Electrical Stimulation in practice</b> Rebecca Grenfell, Senior Physiotherapist, NeuroRehab Allied Health Network and Zoe Crasborn, Senior Occupational Therapist (MCRNOT)
11.30am 30 mins	<b>Freedom Through Mobility</b> Amin Akbarian, CEO Mobility Engineering	<b>Yoga – a journey of reconnection with self and community, an embodying practice for all abilities</b> Lisa Bidgood, Occupational Therapist	<b>TD pilot: eye control for the iPad</b> Charlene Cullen, Assistive Technology Specialist - Link Assistive	<b>How adaptive clothing can benefit people with short and long term situations</b> Penny Weber, The Shapes United, CEO
1.00pm 45 mins	<b>Paediatric Panel</b> MODERATOR: Robert Norman - RTD National Educator PANELISTS: Amin Akbarian - CEO Mobility Engineering, Jamie Cockle - Medifab Clinical Educator, Kate Pain - GTK Clinical Educator, Ali Gebhardt - Clinical Director NAPA	<b>Changes with Age - Giving You the Justification for Custom Manual Wheelchairs for the Geriatric Client</b> Christie Hamstra, Clinical Education Specialist, Motion Composites	<b>Manual wheelchairs: how we apply the evidence to practice</b> Rachel Fabiniak, Permobil Director of Clinical Services - Asia-Pacific	<b>Innovation – a look at how the latest innovations benefit power wheelchair users</b> Nabil Kods, National Clinical Educator, Pride Mobility

### HALL 2

## WEDNESDAY, 24 MAY 2023

	ROOM 1	ROOM 2	ROOM 3	ROOM 4
2.00pm 30 mins	<b>The only way is up: The possibilities of Ceiling Lifter design and function</b> Elissa Coates - National Clinical Education Manager, Novis Health	<b>Power Assist devices - providing more than physical relief for manual wheelchair users</b> Tilly Brook, Clinical Education Specialist - Permobil Asia-Pacific	<b>Frame Running - a new Para Athletics event for people with high support needs in balance and mobility</b> Sarah Reedman, Research Fellow, The University of Queensland	<b>How are the surfaces and shape important to prevent pressure sores?</b> Martino Avellis, PT - Ormesa s.r.l.
3.15pm 45 mins	<b>Bums, Bowels, and Bladder: Plane Travel and Things to Consider for Wheelchair Users</b> Tracee-lee Maginnity, Clinical Services Specialist - Permobil APAC	<b>Addressing the effects of tone, spasticity, and other neurologic symptoms on the seated posture</b> Lois Brown, ILS National Clinical Education Manager	<b>MAT 101 – Next Steps - So You've Taken a MAT 101 Course - How do you implement those skills into your wheelchair prescription process?</b> Amy Bjornson, Clinical Director, Sunrise Medical	<b>Why does equipment for children need to be so different from that for adults?</b> Dr Barend ter Haar, Director, BES Healthcare Ltd

### HALL 1

## WEDNESDAY, 24 MAY 2023

	ROOM 5 - HALL 1
9.45am 90 mins	<b>Age Lab Workshop</b> Adeline Chua, PhD. Senior Manager of Customer Insights at GWA Peter Sweatman, PhD. is the Senior Manager Product Visualisation at GWA
11.30am 30 mins	<b>Help Post Polio Syndrome Patients Now!</b> Gary Newton and Devalina Bhattacharjee, Polio Australia
1.00pm 45 mins	<b>From Autism Diagnosis to OAM</b> With Daniel Giles OAM and Daryl Giles from Speaking Insights
2.00pm 30 mins	<b>Making Invisible Disabilities Visible</b> With Cristina de Moraes Leme from We Coach
3.15pm 45 mins	<b>PANEL – Autism Support Apps</b> Facilitated by Anita Aherne, Living on the Spectrum Guests: Michelle Ridsdale - Kaboose app, Jewel - Unique StarShine app, Dwayne Fernandes - Minds at Play

### HALL 2

## THURSDAY, 25 MAY 2023

	ROOM 1	ROOM 2	ROOM 3	ROOM 4
8.30am - 10.00am 90 mins		<b>BREAKFAST SESSION</b> <b>Mat evaluation 101 for wheelchair skills training - tips, tricks and advice from what I have learned along the way...</b> Amy Bjornson, Clinical Director - Sunrise Medical		
9.15am 45 mins	<b>Environment, environment, environment - specialised intervention in children and adolescents with unilateral Cerebral Palsy (uCP)</b> Andrea Espei, head of training at Schuchmann Reha, Germany		<b>Stand up for independence</b> Maryann M. Girardi, Clinical Education Specialist, Altimate Medical, Inc.	<b>Postural Care: the rise of therapeutic positioning in the lying posture around the world</b> Anna Goldsmith, Director, Simple Stuff Works Associates Ltd and Joana Santiago, Clinical Educator, Medifab
10.15am 30 mins	<b>TGA</b> Rebecca Bateson, A/g Director - Devices Emerging Technology and Diagnostics Medical Devices Surveillance Branch	<b>Toileting and special needs: where to start?</b> Lori Potts, Physical Therapist, Rifton Product and Training Specialist	<b>Assistive technology (AT) in Australia: current opportunities and challenges for the AT sector.</b> Associate Professor Libby Callaway, President, Australian Rehabilitation and Assistive Technology Association (ARATA)	<b>The benefits of electric assisted trikes for people living with disability,</b> Richard Herklots, Owner-operator, everyBody eBikes
11.00am 45 mins	<b>Improving AT outcomes by strengthening the collaboration of the AT supplier and therapist</b> Kim Vien, Senior Occupational Therapist (Royal Melbourne Hospital, Wheelchair and Seating Clinic as part of the Young Adults Transition Service) & Lois Brown, National Clinical Education Manager for ILS	<b>Need not niche - power wheelchair assessment to provide freedom &amp; function</b> Scott Staunton, Rehabilitation Engineer, Client Sales Manager: Magic Mobility	<b>When manual is no longer enough - power add on considerations</b> Tracee-lee Maginnity, Clinical Services Specialist - Permobil APAC	<b>Managing Behaviours of concern through wheelchair interventions that allow for sensory expression and enhance participation</b> Lauren Hunter, Director of Clinical Services - LINDS Rehabilitation Equipment

### HALL 2

## THURSDAY, 25 MAY 2023

	ROOM 1	ROOM 2	ROOM 3	ROOM 4
1.00pm 30 mins	<b>Adaptive Clothing Fashion Show</b>	<b>Why SOS wristwatches differ from smartwatches by Apple, Samsung and others</b> Lance Starke, Co-Owner of Guardian Safety Pendants	<b>Up-to-date physical activity guidelines: rising to the challenge</b> Lori Potts, Physical Therapist, Rifton Product and Training Specialist	<b>The importance of choice and control</b> David Sinclair, Executive Officer, ATSA
2.00pm 30 mins	<b>Diversifying standing opportunities for children: What are the options and how do we clinically reason and provide justification for funding them?</b> Jamie Cockle, Clinical Educator Medifab	<b>Power functions that create unique client centered solutions</b> Lauren Hunter, Director of Clinical Services, Linds Rehabilitation Equipment	<b>Are adjustable wheelchair cushions better?</b> Tom Whelan, Vice President Product Development at Ki Mobility	<b>Ages and stages - positioning through the day in the real world</b> Jacinta Maurin, Clinical Hub, Sunrise Medical

### HALL 1

## THURSDAY, 25 MAY 2023

	ROOM 5 - HALL 1
9.45am 90 mins	<b>Age Lab Workshop</b> Adeline Chua, PhD. Senior Manager of Customer Insights at GWA Peter Sweatman, PhD. is the Senior Manager Product Visualisation at GWA
1.00pm 45 mins	<b>PANEL - Sensory Self-Harm Prevention</b> Facilitated by Anita Aherne, Living on the Spectrum Guests: Annelil Desille - Own your Mental, Joanne Seymon - Kaiko Fidgets, Emma Clegg - Jam the Label
2.00pm 30 mins	<b>Maximising Autism Support with Allied Health Assistants</b> Nikita Fernandes, FORA



# link

australia's  
national  
disability  
magazine

## LINK Magazine is Australia's premier national cross-disability publication.

The magazine is published in print and online to share the latest news, research and opinion on issues facing the disability sector.



GET IN TOUCH



**EDITORIAL**  
**Kymerly Martin**  
kymberly@intermedia.com.au  
(02) 8586 6164

**ADVERTISING**  
**Michelle Stevens**  
mstevens@intermedia.com.au  
0419 822 717